

## Adjustments (cont)

### Hydraulic Feeder House Fore/Aft Tilt Adjust

**NOTE:** Only works if equipped with hydraulic feeder house fore/aft tilt.

Hydraulic feeder house fore/aft tilt adjust allows operator to increase or decrease angle of feeder house tilt frame.

1. Touch plus (+) or minus (-) symbol or rotate selection dial to adjust angle of feeder house tilt frame.
  - Increase tilts feeder house tilt frame angle forward.
  - Decrease tilts feeder house tilt frame angle rearward.
2. Display shows operator adjustment settings.

### Side Belt Speed Reduction Switch

**NOTE:** Only works on draper platforms.

Slowing side draper belts speed enhances feeding performance when crop is harvested on one side of platform, due to irregular shaped fields.

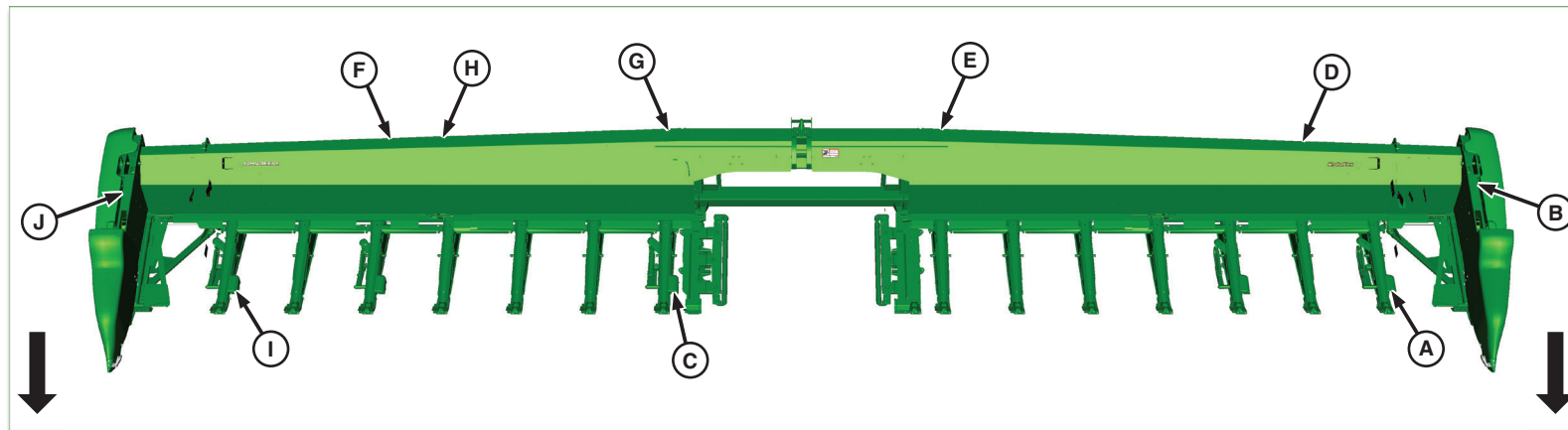
Side belt speed reduction switch allows speed of draper belt to automatically slow to a factory setpoint speed.



1. Press side belt speed reduction switch.
2. Slow speed mode engaged will appear on display and draper belt speed automatically slows to factory setpoint speed.
3. Pressing belt speed reduction switch again or attempting to make manual belt speed adjustments while in slow speed mode automatically returns belt speed to original speed set by operator.

**NOTE:** If current draper belt speed is slower than factory setpoint speed, system will not engage and a diagnostic trouble code will appear.

See your John Deere dealer if factory setpoint speed needs to be adjusted.



600FD Sensor Voltage Map

S-Series LC1 Address			
Controller	Address	Display	Description
LC1	21	__ n n n X X X	(A) Left-Hand Auxiliary Height Sensor Voltage (cc #9826)
LC1	21	__ X X X n n n	(B) Left-Hand Main Height Sensor Voltage (cc #9816)
LC1	22	__ n n n X X X	(C) Center Auxiliary Header Height Sensor Voltage (cc #9803)
LC1	22	__ X X X n n n	(D) Center Main Header Height Sensor 1 Voltage 630FD/645FD (cc #9817)
LC1	22	_____ n n n	(E) Center Main Header Height Sensor 1 Voltage 635FD/640FD (cc #9817)
LC1	23	__ n n n X X X	(F) Center Main Header Height Sensor 2 Voltage 630FD/645FD (cc #9804)
LC1	23	__ X X X n n n	(G) Center Main Header Height Sensor 2 Voltage 635FD/640FD (cc #9804)
LC1	30	n n X X X	(H) Cutterbar Flex Pressure Sensor
LC1	24	__ n n n X X X	(I) Right-Hand Auxiliary Height Sensor Voltage (cc #9828)
LC1	24	__ X X X n n n	(J) Right-Hand Main Height Sensor Voltage (cc #9818)

70 Series LC1 Address			
Controller	Address	Display	Description
LC1	31	_____ n n n	(A) Left-Hand Auxiliary Height Sensor Voltage (cc #9826)
LC1	28	_____ n n n	(B) Left-Hand Main Height Sensor Voltage (cc #9816)
LC1	32	_____ n n n	(C) Center Auxiliary Header Height Sensor Voltage (cc #9803)
LC1	29	_____ n n n	(D) Center Main Header Height Sensor 1 Voltage 630FD/645FD (cc #9817)
LC1	29	_____ n n n	(E) Center Main Header Height Sensor 1 Voltage 635FD/640FD (cc #9817)
LC1	33	_____ n n n	(F) Center Main Header Height Sensor 2 Voltage 630FD/645FD (cc #9804)
LC1	33	_____ n n n	(G) Center Main Header Height Sensor 2 Voltage 635FD/640FD (cc #9804)
LC1	27	_____ n n n	(H) Cutterbar Flex Pressure Sensor
LC1	30	_____ n n n	(I) Right-Hand Main Height Sensor Voltage (cc #9828)
LC1	30	_____ n n n	(J) Right-Hand Main Height Sensor Voltage (cc #9818)

\* Read the "n" value in the display for each sensor reading.



## 600FD-Flexible Draper Active Header Height Control (AHHC) Quick Reference Guide

### 600FD-Flexible Draper Platforms are compatible with John Deere 70 Series STS and John Deere S-Series Combines.

- Refer to inside fold out portion of this guide for basic setup and Troubleshooting.
- Refer to outside fold out portion of this guide for Calibration Procedures and a Sensor Voltage Map.

**IMPORTANT:** This guide is to assist operators with correct setup and operation of 600FD Flexible Draper Platform.

Always refer to your Operator's manual for questions.

Copyright © 2014 Deere & Company. All Rights Reserved. THIS MATERIAL IS THE PROPERTY OF DEERE & COMPANY. ALL USE AND OR REPRODUCTION NOT SPECIFICALLY AUTHORIZED BY DEERE & COMPANY IS PROHIBITED.

All information, illustrations, and specifications in this manual are based on the latest information available at the time of publication. The right is reserved to make changes at any time without notice.

## AHHC Mode Options

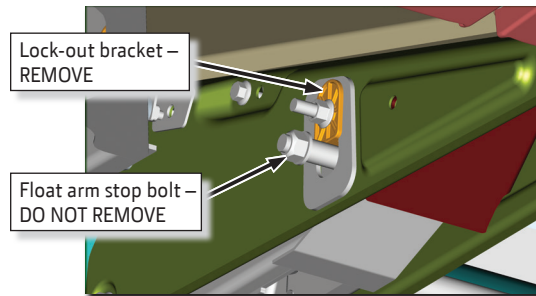
For Flex Draper, there are two unique Active Header Height Sensing (AHHS) modes:

- On-ground (“flex mode”) – soybeans, lentils, chickpeas
- Off-ground (“rigid mode”), auxiliary attachment – wheat, barley, oats, canola

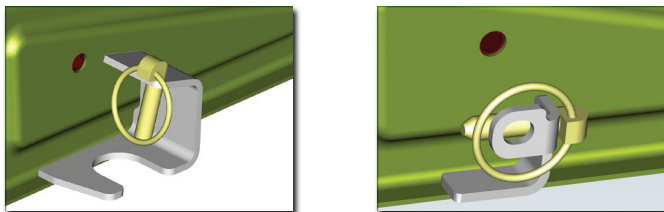
Float arm brackets may be reinstalled for operating in off-ground mode after the feeder house speed calibration and header calibration has been completed.

For on-ground mode, these brackets must be removed.

Ensure that only the lock-out bracket cross bolt is removed when unlocking float arms. The second “float arm stop bolt” is critical for function:

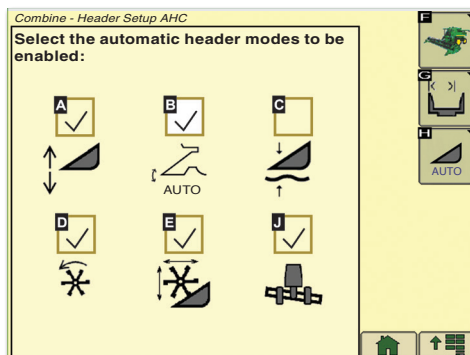


When using off-ground mode with the ground-engaging sensor arms unpinned ensure grease has been added to sensor arm pivot shaft and that sensor arm rotates freely. Also, ensure storage pin is placed in correct location on float arm, and not left on sensor arm:



## Recommended Header Modes to Enable

Multi-function lever buttons 2 and 3 will Activate Header Height Control (AHHC) with boxes (A) and (B) enabled.



**IMPORTANT:** Performing any header calibration may automatically enable all six header modes. It is recommended to revisit screen above and turn off box (C) before returning to harvest. Box (C) enables Feeder House float mode, which does not utilize functionality of AHHC system on header.

## Calibrations

Calibrating the feeder house speed and then the AHHC sensors is required to initially use system. **Calibration verifies AHHC sensors are set within operating range.** A failed calibration often means a sensor is not set properly. See **Troubleshooting** and **Sensor Voltage Maps** for more information.

Tuning Calibration is also available after a Header Calibration is performed. This tuning operation improves sensitivity of Height Sensing function and is recommended to be performed whenever possible.

## Troubleshooting

If a Header Calibration fails, there are several common causes and solutions:

### Sensors out of range

- Sensors may not be adjusted properly: *see Sensor Voltage Settings*
- Damaged wiring harness: *Inspect wiring harness leading to all AHHC sensors*
- Broken sensor or components: *Inspect sensors*

### Sensors seeing less than 1.2 V of range

- Broken sensor or components: *Inspect sensors*
- Lock-out brackets still installed in float arms
- Off-ground sensor arm still pinned up
- Off-ground sensor arm unable to fully rotate due to lack of lubrication: *add grease to fitting on float arm*
- Damaged wiring harness: *Inspect wiring harness leading to all AHHC sensors*

### Sensors seeing too much voltage range

- Float arm stop bolt was removed: *Check float arms for stop bolts*

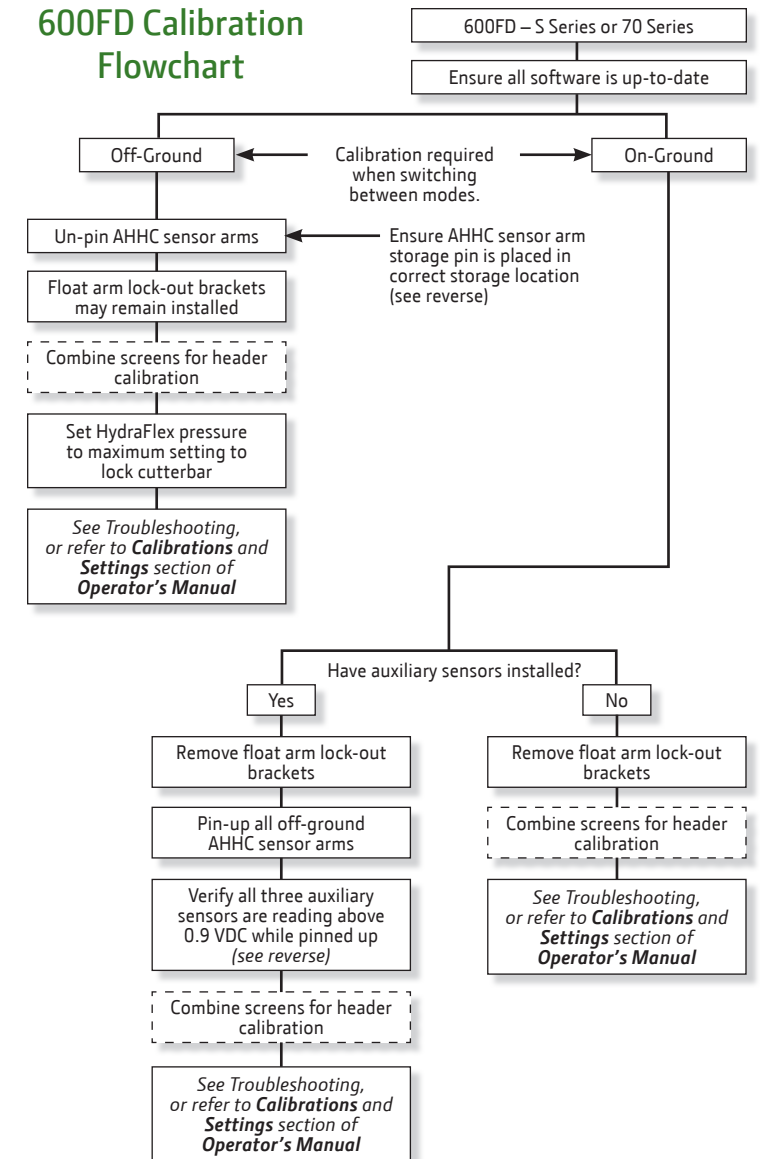
## Sensor Voltage Settings

Operating range of AHHC Sensors is 0.5 – 4.5 volts. Sensor voltage readings can be viewed in LC1 Diagnostic Addresses – see *Calibrations and Settings* section of the *Operator’s Manual*.

It is **highly recommended** to set the sensors at 0.9 – 4.1 volts to ensure the sensor does not shift out of the operating range.

If a Header Calibration fails, see the **600FD Sensor Voltage Maps** (backside) to ensure all sensors are set correctly.

## 600FD Calibration Flowchart



## Adjustments

### Belt Speed Adjust

**NOTE:** Only works on drapers and belt pickups.

Draper belt speed adjust allows operator to increase or decrease belt speed.

1. Press Header Adjust Switch twice.
2. Touch plus (+) or minus (-) symbol or rotate selection dial to increase or decrease belt speed.
3. Display shows operator adjustment settings. (cont on backside)