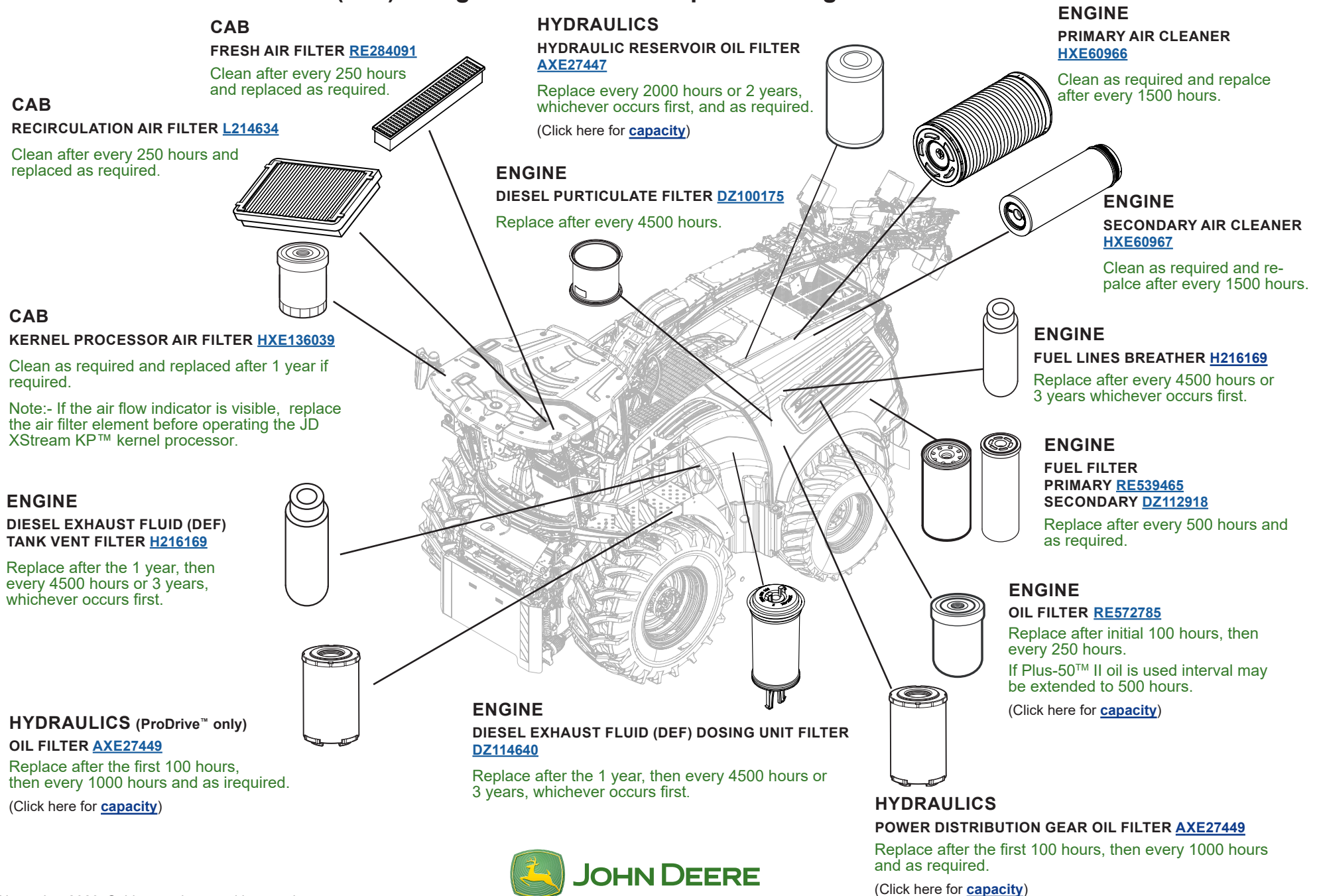


FILTER OVERVIEW WITH SERVICE INTERVALS AND CAPACITIES

Final Tier 4 (FT4) / Stage V Series Self-Propelled Forage Harvesters - 9600



CAPACITIES

Final Tier 4 (FT4) / Stage V Series Self-Propelled Forage Harvesters - 9600

CAPACITIES (Approximate):

Fuel Tank:

..... 1100 L (290 gal)

DEF Tank: 43 L (11.4 gal)

Water Tank: 20 L (5.3 gal)

Cooling System (Complete):

Cool-Gard™ II

..... 110 L (29.1 gal)

Engine with Filter:

Plus-50™ II

..... 58 L (15.3 gal)

Transmission (PBS):

GL-5

..... 9.6 L (2.54 gal)

Transmission (ProDrive™):

Hy-Gard™

..... 16 L (4.22 gal)

Final Drives (Each):

GL-5

..... 7 L (1.85 gal)

Additive Dosing System Capacity:

Reservoir (high-volume) 360 L (95 gal)

Reservoir (low-volume) 30 L (8 gal)

Central Lubrication System Capacity:

Reservoir 8 KG (17.6 lb)

JD XStream KP™ Kernel Processor Lubrication System Capacity:

Reservoir 8 L (2.1 gal)

Four-Wheel Drive Rear Axle:

GL-5

Differential (Heavy Duty) 17 L (4.49 gal)

In Motor Housing 1 L (0.26 gal)

Reduction Gear 0.7 L (0.19 gal)

Hydraulic System:

Hy-Gard™

Hydraulic Oil Reservoir 50 L (13.2 gal)
(Without High Flow Dump Option)

Hydraulic Oil Reservoir 70 L (18.5 gal)
(With High Flow Dump Option)

Right Feedroll Gearbox 6.7 L (1.77 gal)

Left Feedroll Gearbox 1.55 L (0.41 gal)

Header Gearbox (Heavy Duty) 0.92 L (0.24 gal)

Power Distribution Gear Lubrication System:

Reservoir 22 L (5.81 gal)

Complete circuit 27 L (7.13 gal)

Hy-Gard™

..... 33 L (8.7 gal)

Brake System (PBS Transmission):

DOT3 or DOT4

Brake Fluid 1 L (0.26 gal)

Reservoir 0.5 L (0.13 gal)

Air Compressor System Capacity:

Reservoir 40 L (10.6 gal)

Air Conditioning System:

Refrigerant 2700 or 2900 g (6.0 or 6.5 lb)



[Return to Filter Overview](#)