

FILTER OVERVIEW WITH SERVICE INTERVALS AND CAPACITIES

5025 Series Tractors (5225, 5325, 5425, 5525, 5625)

CAB

RECIRCULATION AIR FILTER

– [RE195491](#)

Please order two.

Clean after every 300 hours and as required.

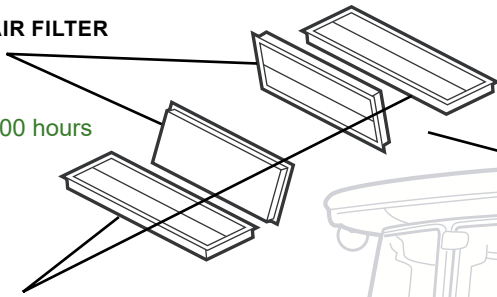
CAB

FRESH AIR FILTER

– [RE198488](#)

Please order two.

Clean after every 300 hours and as required.



ENGINE

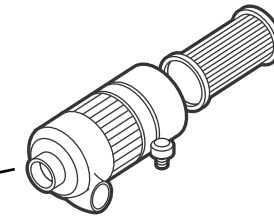
OIL FILTER (5225–5325) – [RE519626](#)

Replace after 300 hours and then every 450 hours or annually if using John Deere™ Plus-50™ oil.

OIL FILTER (5425–5625) – [RE504836](#)

Replace after 100 hours and then every 450 hours or annually if using John Deere™ Plus-50™ oil.

(Click here for [capacity](#))



ENGINE

SECONDARY AIR FILTER – [AT171854](#)

Replace after every 1800 hours or every 1 year and as required.

ENGINE

PRIMARY AIR FILTER – [KV16429](#)

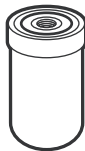
Clean after every 300 hours and replace every 1800 hours or annually and as required.

HYDRAULIC/TRANSMISSION

OIL FILTER – [RE197065](#)

Replace after 100 and then every 600 hours.

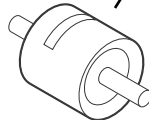
(Click here for [capacity](#))



ENGINE

IN-LINE FUEL FILTER – [RE220719](#)

Replace as required.

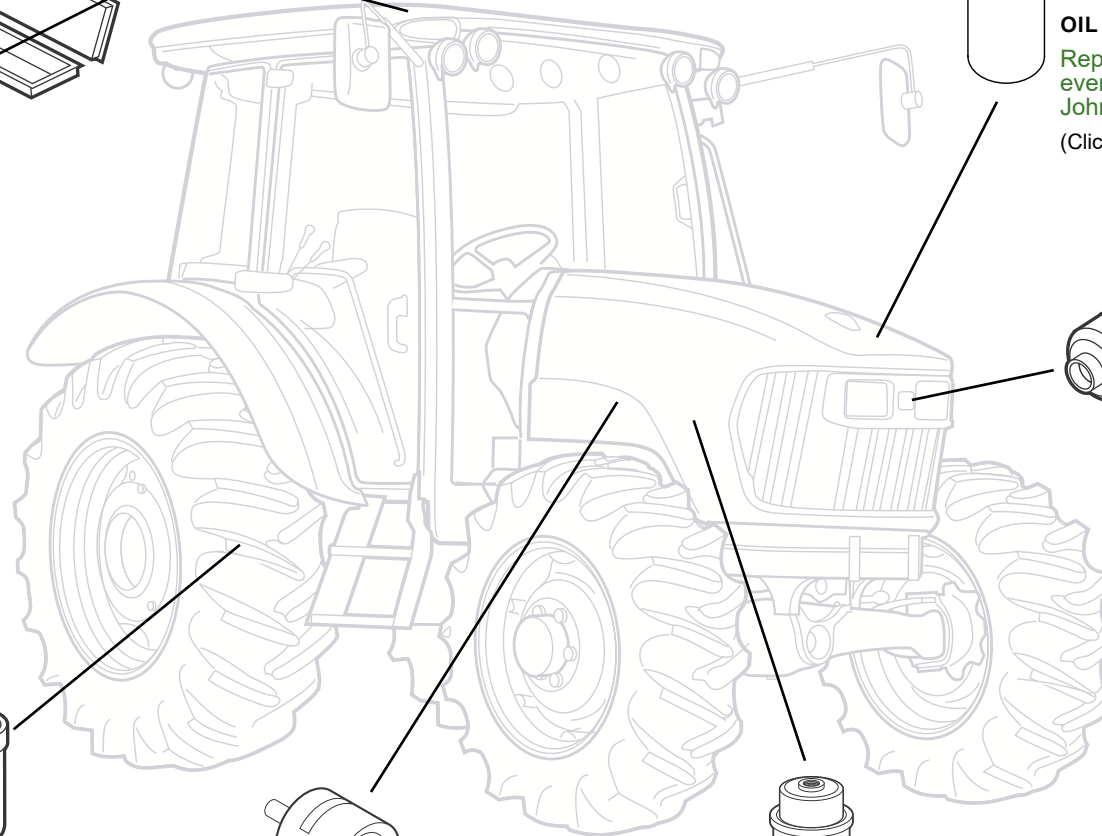


ENGINE

FUEL FILTER (5225–5325) – [RE508202](#)

FUEL FILTER (5425–5625) – [RE522868](#)

Replace after every 300 hours and as required.



JOHN DEERE

Genuine Parts and Service

CAPACITIES

5025 Series Tractors (5225, 5325, 5425, 5525, 5625)

CAPACITIES (Approximate):

Fuel Tank:

Straddle Mount and Hi-Crop	94.6 L (25 gal)
Cab and IOOS	126.8 L (33.5 gal)

Cooling System:

Cool-Gard™

5225-5325	9.5 L (10 qt)
5425-5525-5625	11.4 L (3 gal)

Crankcase with Filter:

Plus-50™

5225-5325	10 L (2.6 gal)
5425-5525-5625	8.5 L (2.24 gal)

Transmission and Hydraulic System:

Hy-Gard™

9/3 SyncShuttle	39 L (10.3 gal)
12/12 Power Reverser™	43.5 L (11.5 gal)
24/24 Power Reverser™	45.4 L (12 gal)

Mechanical Front Wheel Drive (MFWD) Axle:

Hy-Gard™

Differential Housing	4.5 L (1.18 gal)
Wheel Hub (Each)	0.7 L (0.18 gal)

[Return to Filter Overview](#)

