

FILTER OVERVIEW WITH SERVICE INTERVALS AND CAPACITIES

8RT Tractor(s) Final Tier 4 (FT4) (923001-) - 8RT 310, 8RT 340, 8RT 370 And 8RT 410

CAB

RIGHT FUEL VENT - [RE590260](#)

Replace after every 1500 hours.

ENGINE

SECONDARY AIR FILTER - [RE596318](#)

Replace after every 1000 hours, or as indicated, whichever occur first. (Interval may vary according to operating conditions).

ENGINE

PRIMARY AIR FILTER - [RE596317](#)

Replace after every 1000 hours, or as indicated, whichever occur first. (Interval may vary according to operating conditions).

ENGINE

FUEL WATER SEPERATOR FILTER (IF EQUIPPED) - [AT365869](#)

Replace after every 500 hours.

ENGINE

SECONDARY FUEL FILTER FILTER ELEMENT - [DZ112918](#)

Replace after every 500 hours, or as indicated, whichever occurs first.

ENGINE

PRIMARY FUEL FILTER FILTER ELEMENT - [RE539465](#)

Replace after every 500 hours, or as indicated, whichever occurs first.

ENGINE

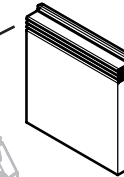
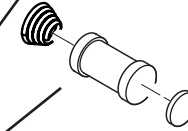
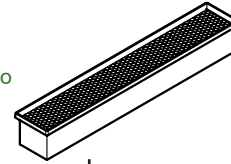
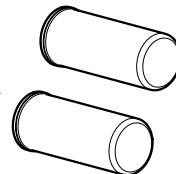
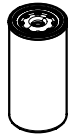
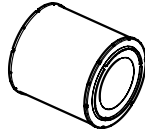
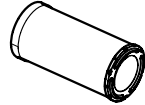
ENGINE OIL FILTER - [RE509672](#)

Minimum hours before first engine oil change 100 hours. Extended engine oil change every 500 hours or annually, whichever come first. The extended 500 hour interval is only allowed if using Plus-50™ II oil with a John Deere filter and diesel fuel with sulfur content less than 15mg/kg (15ppm). If all conditions are not met, change oil and filter at 250 hours of operation.

CAB

FRESH AIR FILTER - [RE284091](#)

Replacement interval can vary according to operating conditions. Normal service is 1000 hours or annually, whichever occurs first.



SUSPENSION COMPRESSOR FILTER - [R556122](#)

Service at 1500 operating hours or annually, whichever ever comes first.

SCV

PILOT FILTER - [RE269061](#)

Replace after every 1500 hours.

CAB

RECIRCULATION AIR FILTER - [RE593819](#)

Replacement interval can vary according to operating conditions. Normal service is 1000 hours or annually, whichever occurs first.

LEFT FUEL VENT - [RE566125](#)

Replace after every 1500 hours.

ENGINE

DEF TANK VENT FILTER - [H216169](#)

Replace after every 1500 hours.

ENGINE

DEF SUPPLY MODULE FILTER - [DZ114640](#)

Replace after every 3000 hours or every 3 years whichever occurs first.

HYDRAULIC OIL FILTER ELEMENT - [RE210857](#)

Replace after every 1500 hours.

HYDRAULIC STEERING FILTER - [RE577250](#)

Replace after every 1500 hours.



JOHN DEERE

Genuine Parts and Service

CAPACITIES

8RT Tractor(s) Final Tier 4 (FT4) (923001-) - 8RT 310, 8RT 340, 8RT 370 And 8RT 410

CAPACITIES (Approximate):

Fuel Tank:

..... 764 L (202 gal)

DEF Tank:

..... 31.3 L (8.3 gal)

Cooling System:

Cool-Gard™ II

..... 42.3 L (11.2 gal)

Transmission / Hydraulics / differential System:

Hy-Gard™

..... 197 L (52 gal)

Engine Crankcase Oil Volume:

Plus-50™ II

..... 25.7 L (6.8 gal)

[Return to Filter Overview](#)

