

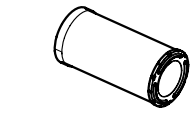
# FILTER OVERVIEW WITH SERVICE INTERVALS AND CAPACITIES

8RX Tractor(s) Final Tier 4 (FT4) (801001-) - 8RX 310, 8RX 340, 8RX 370 And 8RX 410

## ENGINE

### PRIMARY AIR FILTER - [RE596317](#)

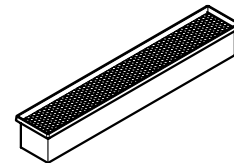
Replace after every 1000 hours, annually or as indicated, whichever occur first. (Interval may vary according to operating conditions).



## ENGINE

### SECONDARY AIR FILTER - [RE596318](#)

Replace after every 1000 hours, annually or as indicated, whichever occur first. (Interval may vary according to operating conditions).



## CAB

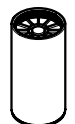
### FRESH AIR FILTER - [RE284091](#)

Replacement interval can vary according to operating conditions. Normal service is 1000 hours or annually, whichever occurs first.

## ENGINE

### FUEL WATER SEPERATOR FILTER (IF EQUIPPED) - [AT365869](#)

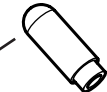
Replace after every 500 hours.



## ENGINE

### FUEL TANK VENT FILTER - [H216169](#)

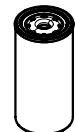
Replace after every 1500 hours.



## ENGINE

### SECONDARY FUEL FILTER FILTER ELEMENT - [DZ112918](#)

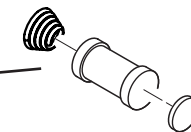
Replace after every 500 hours, or as indicated, whichever occurs first.



## SCV

### FILTER (IF EQUIPPED) - [RE269061](#)

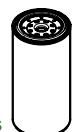
Replace after every 1500 hours.



## ENGINE

### PRIMARY FUEL FILTER FILTER ELEMENT - [RE539465](#)

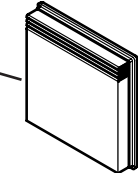
Replace after every 500 hours, or as indicated, whichever occurs first.



## CAB

### RECIRCULATION AIR FILTER - [RE593819](#)

Replacement interval can vary according to operating conditions. Normal service is 1000 hours or annually, whichever occurs first.



## ENGINE

### ENGINE OIL FILTER

### FILTER ELEMENT - [RE509672](#)

Minimum hours before first engine oil change 100 hours. Extended engine oil change every 500 hours or annually, whichever come first. The extended 500 hour interval is only allowed if using Plus-50™ II oil with a John Deere filter and diesel fuel with sulfur content less than 15mg/kg (15ppm). If all conditions are not met, change oil and filter at 250 hours of operation.



## ENGINE

### DEF TANK VENT FILTER - [H216169](#)

Replace after every 1500 hours



## ENGINE

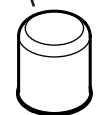
### DEF SUPPLY MODULE FILTER - [DZ114640](#)

Replace after every 3000 hours or every 3 years whichever occurs first.



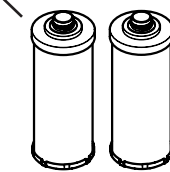
### AIR DRYER - [AL204884](#)

Replace filter at least every 2 years, regardless of operating hours.



### HYDRAULIC OIL FILTER ELEMENT - [RE596661](#)

Replace after every 1500 hours.



## ENGINE

### DEF INLINE FILTER - [DZ110513](#)

Replace after every 3000 hours or every 3 years whichever occurs first.



**JOHN DEERE**

Genuine Parts and Service

# CAPACITIES

## 8RX Tractor(s) Final Tier 4 (FT4) (801001-) - 8RX 310, 8RX 340, 8RX 370 And 8RX 410

### CAPACITIES (Approximate):

#### Fuel Tank:

..... 927 L (245 gal)

#### DEF Tank:

..... 37.2 L (9.8 gal)

#### Cooling System:

##### Cool-Gard™ II

..... 42.3 L (11.2 gal)

#### Engine Crankcase Oil Volume, Including Filter:

##### Plus-50™ II

..... 26.6 L (7 gal)

### Transmission / Differential / Hydraulic System

76 in and 80 in ..... 226 L (60 gal)

88 in and 120 in ..... 246 L (65 gal)

### Axle Housing

76 in ..... 16.5 L (4.3 gal)

80 in ..... 19.5 L (5.2 gal)

88 in ..... 27.3 L (7.2 gal)

120 in ..... 34.1 L (9.0 gal)

### Final Drive (Each)

1700 MFWD ..... 3.8 L (1 gal)

[Return to Filter Overview](#)