

L-SERIES  
**CRAWLER DOZER**



JOHN DEERE

850L



**MUSCLE MEETS  
PERFORMANCE**



*EXPEC*



+



**LARGER & MORE  
POWERFUL\***

**MORE  
PRODUCTIVE\***

\*Compared to previous K-Series model.

**CT BIG THINGS**  
**FROM AN 850L.**



## **GAME ON.**

Need big results on big jobs? The 850L will help you bring your "A" game. Larger and more powerful than the previous K-Series model, it's tough enough to handle the most demanding conditions. With state-of-the-art controls, the usual John Deere arsenal of production-boosting hydrostatic advantages, along with Slope Control and SmartGrade™ options, it provides the finesse you need to tackle precision work. Beefed up on the outside, it's bigger on the inside, too, with a roomier, more comfortable cab along with a host of creature comforts. You'll find what you need to take on your competition in an 850L.

# **PACK A PRODUCTIVE PUNCH**

## **HEAVY HITTER.**

Whether you're fine grading or mass excavating, this durable dozer can do both — and more. Its roomier cab will help operators roll with whatever punches the jobsite throws their way.



**10% MORE  
ENGINE POWER,  
23% MORE TORQUE  
OVER PREVIOUS MODEL**

### **As comfortable as the day is long**

Featuring sleek automotive styling, an angled seat for a clear view to the ripper, ergonomic joysticks, ample storage, and an automatic temperature control (ATC) option, the operator station provides daylong comfort and convenience.

### **Boost productivity, big time**

With more power, weight, and stability than its predecessor, the 850L Crawler Dozer makes it easy to get more done.

### **Don't settle for average grades**

Standard electrohydraulic (EH) controls paired with entry-level and advanced grade-management offerings make it easy for you to achieve target grades. When you opt for SmartGrade Ready including Slope Control, it's easy to upgrade to the fully integrated John Deere SmartGrade machine-control system.

### **Higher-displacement 9.0L engine**

PowerTech™ PSS 9.0L diesel replaces the previous 6.8L engine, enabling 10-percent more engine power and 23-percent more peak torque. This EPA Final Tier 4 (FT4)/EU Stage IV-certified engine delivers a winning combination of performance, fluid efficiency, and reliability.



**AUTO  
SMARTGRADE**



STANDOUT FEATURE

A close-up, low-angle shot of a yellow John Deere 850L tractor. The tractor is positioned on a pile of dark brown soil, with its front loader bucket raised and filled with dirt. The tractor's body is primarily yellow with black accents, including the large front grille and the operator's cab. The John Deere logo is visible on the side of the grille. The background shows a clear blue sky and some green foliage. The overall scene conveys a sense of power and productivity in a construction or agricultural setting.

**GET MORE,  
DO MORE.**



# **FAST-TRACK PRODUCTIVITY**

*POWER, STABILITY, AND A WIDER BLADE.*

Featuring the widest Power-Angle-Tilt (PAT) blade in its class, the 850L delivers more horsepower and torque than its predecessor, for increased productivity. Plus, an eight-roller undercarriage improves stability for fine grading.

## **Slope Control**

Optional SmartGrade Ready including Slope Control provides simple-to-use grade control that allows operators to set and hold a grade or slope through terrain changes. It helps both new and veteran operators to hold grade with less effort, fewer corrections, and minimal adjustments to the blade.

## **A smart choice**

SmartGrade features next-generation components and protection, providing a fully integrated 3D grade-control system and enabling the highest levels of productivity and grading performance.

## **Extend your workday**

Standard LED lights help show the way when you need to work past or before daylight. For additional illumination, opt for a premium high-output lighting package, which is twice as bright.

## **On the right track**

Eight-roller, 130-inch undercarriage puts more track on the ground, for better stability and fine-grading capability over its predecessor. When the job requires a power-angle-tilt (PAT) or outside dozer (OSD) blade, either is available in extra-long-track (XLT), wide-long-track (WLT), and low-ground-pressure (LGP) track configurations.

## **Power up**

The 850L delivers 20 more horsepower than our previous model, allowing you to move material quicker when carrying large loads.

## **Widest PAT blade on the market**

At 172 inches, the PAT blade is the widest in its class — helping to increase productivity, especially when grading.



**WIDER  
172-in.  
BLADE**

# EXCEPTIONAL STYLE, VISIBILITY, AND COMFORT

## EASY ON THE EYES — AND THE OPERATOR.

Featuring eye-catching automotive styling, the cab is even more spacious, quiet, and comfortable than previous models. Exceptional visibility, extra storage, and an improved HVAC system help take the sting out of a long day.

### Take total control

Exclusive Total Machine Control (TMC) monitor lets an operator quickly change settings with the simple push of a button. Forward/reverse ground-speed ranges, steering modulation, and F-N-R shift rate can be easily customized to operator preferences. Decelerator mode and forward/reverse speed ratio are accessible through the sealed-switch module.

### Set and forget

Optional automatic temperature control (ATC) system allows operators to simply select a desired temperature instead of fiddling with knobs to get comfortable.

### Sit back and enjoy the ride

Standard high-back air-suspension seat with two inches of extra travel adjusts multiple ways for daylong comfort and support. Seat is angled to reduce neck and back strain when running the rear implement. Optional deluxe heated- and leather-bolstered lower cushion has your back in colder weather. A ventilated seat option also boosts operator comfort.

### Keep an eye on things

Large, easy-to-navigate monitor provides intuitive, push-button access to a wealth of machine information, including temperatures, pressures, and diagnostics. Opt for a rearview camera to display the action behind the machine.

### Low-effort control

Updated ergonomic joysticks provide intuitive, low-effort control of the transmission, hydraulics, and rear implement. Use a rocker switch on the left joystick to control direction and a thumb roller to adjust speed. A thumb roller on the right joystick enables precise, proportional control of PAT blade angle or OSD power pitch. Rear implement control provides a stable grab handle for operating a ripper in rough terrain and includes a return-to-stow button to raise the ripper.





*IT ALL LOOKS GOOD*  
***FROM HERE.***



PURPOSE-BUILT  
**WASTE-HANDLER**  
PACKAGE (OPTIONAL; LGP ONLY)



*BUILT TOUGH AND*  
**CONFIGURED  
YOUR WAY.**

# UNDERNEATH IT ALL

## THIS DOZER MEANS BUSINESS.

We make it our business to know your business. To meet your unique needs, the 850L can be configured with multiple undercarriage configurations, application-specific blade choices, and numerous other available options. Equip it with special- and severe-duty packages to tackle tasks that many other dozers can't and expand your business opportunities.

### More configurations to meet your needs

Configurations including pipelayer-ready, mechanical-angle blade, waste handler, and forestry package let you put this dozer to work in a variety of unique applications.

### Take it on

The 850L has been beefed-up with thicker sheet metal; larger doors; a baffled, sealed engine compartment; larger hydrostatic pumps; a simplified, heavier-duty mainframe; and a more robust c-frame-to-mainframe joint than previous models.

### Redesigned electrical and hydraulic systems

Routing of the electrical and hydraulic systems has been significantly simplified. Hose length has been reduced by 16 percent to minimize system complexity.



# NO BIG DEAL

*SERVICING A BIG MACHINE DOESN'T NEED TO BE A HASSLE.*

## **Fast access to major components**

Simply remove a few bolts and use a hand pump to raise the operator station in a matter of minutes. It tilts a full 65 degrees for easy access to major machine components.

## **Eco mode**

Standard Eco mode adjusts engine power and transmission settings automatically based on load while maintaining ground speed, to help optimize fuel economy.

## **Auto-idle and auto shutdown**

Auto-idle helps save fuel by reducing engine speed when the dozer isn't moving. Auto shutdown turns the engine off after an operator-determined period of idling, further minimizing fuel use while reducing wear on components.

## **Minimal maintenance**

Enlarged service doors provide quick access to conveniently located checkpoints and filters. Extended service intervals help further minimize maintenance and expense.

## **Easy cooling-package cleanout**

Larger fin spacing than in previous models minimizes cooler plugging, extending maintenance intervals. Straight, single-plane cooler arrangement simplifies cleanout through the engine compartment doors and removable side panels.

## **Reversing cooling fan**

Standard hydraulic reversing fan automatically back-blows the cooler cores at preset intervals. Or simply press a button when conditions demand more frequent cleaning.



---

Get valuable insight with

## **PRECISION CONSTRUCTION**

This suite of construction technology delivers **Productivity Solutions** to help you get more done, more efficiently. In-base JDLink™ connectivity provides machine location, utilization data, and alerts to help you maximize productivity and efficiency. Other productivity solutions include grade-management options for multiple machine forms and payload weighing for wheel loaders and articulated dump trucks.

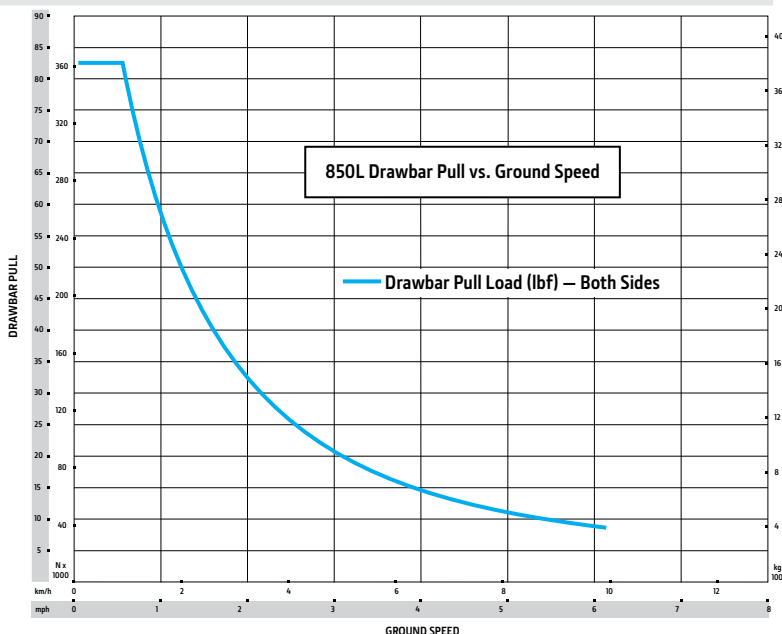
To maximize uptime and lower costs, JDLink also enables **John Deere Connected Support™**. John Deere's centralized Machine Health Monitoring Center analyzes data from thousands of connected machines, identifies trends, and develops recommended actions, called Expert Alerts, to help prevent downtime. Dealers use Expert Alerts to proactively address conditions that may otherwise likely lead to downtime. Your dealer can also monitor machine health and leverage remote diagnostics and programming capability to further diagnose problems and even update machine software without a time-consuming trip to the jobsite.





# 850L SPECIFICATIONS

<b>Engine</b>	850L XLT / 850L WLT / 850L LGP
<b>Blade Type</b>	<i>Power-Angle-Tilt (PAT) / Outside Dozer (OSD)</i>
Manufacturer and Model	John Deere PowerTech™ PSS 6090
Non-Road Emission Standard	EPA Final Tier 4/EU Stage IV
Displacement	9.0L (549 cu. in.)
SAE Net Rated Power	168 kW (225 hp) at 1,700 rpm
Net Peak Torque	1126 Nm (831 ft.-lb.) at 1,500 rpm
Aspiration	Turbocharged and air-to-air aftercooled
Air Cleaner	Dual-element dry canister with external rotary ejector precleaner
<b>Cooling</b>	
Type	Variable-speed suction fan with automatic reversing
Engine Coolant Rating	-37 deg. C (-34 deg. F)
Engine Radiator	7 fins per in.
<b>Powertrain</b>	
<b>Transmission</b>	Automatic, dual-path, hydrostatic (HST) drive; load-sensing feature automatically adjusts speed and power to match changing load conditions; each individually controlled track is powered by a variable-displacement piston pump and motor combination; ground-speed selection buttons on single-lever steering and direction control; reverse speed ratio is fully operator customizable; decelerator pedal provides infinite speed control from full speed to complete stop
System Relief Pressure	47 574 kPa (6,900 psi)
Travel Speeds	
Forward and Reverse	9.7 km/h (6.0 mph)
Maximum (operator selectable)	11.0 km/h (6.8 mph)
<b>Steering</b>	Single-lever steering, speed, direction control, and counter-rotation; full power turns and infinitely variable track speeds provide unlimited maneuverability and optimum control; HST steering eliminates steering clutches and brakes
<b>Final Drives</b>	Double-reduction, planetary final drives mounted independently of track frames and dozer push frames for isolation from shock loads
Total Ratio	44.75 to 1
<b>Drawbar Pull</b>	
Maximum	365 kN (82,000 lb.)
At 1.9 km/h (1.2 mph)	226 kN (50,700 lb.)
At 3.2 km/h (2.0 mph)	143 kN (32,000 lb.)
<b>Brakes</b>	Decelerator/brake pedal; automatic power management with manual override for matching ground speed
Service	HST (dynamic) braking stops the machine whenever the direction/steering-control lever is moved to neutral or the decelerator is depressed to the end of travel
Parking	Exclusive safety feature engages wet, multiple-disc brakes whenever the engine stops, the decelerator is depressed to the end of travel, or motion is detected while the transmission control is in neutral; machine cannot be driven with brake applied, minimizing wearout; spring applied, hydraulic release



While general information, pictures, and descriptions are provided, some illustrations and text may include product options and accessories NOT AVAILABLE in all regions, and in some countries products and accessories may require modifications or additions to ensure compliance with the local regulations of those countries.

# 850L SPECIFICATIONS



Hydraulics		850L XLT / 850L WLT / 850L LGP				
Blade Type	PAT		OSD			
Type	Open-center load-sense hydraulic system with variable-displacement piston pump					
Pump Displacement	74 cc		74 cc			
System Relief Pressure	24 993 kPa (3,625 psi)		24 993 kPa (3,625 psi)			
Differential Pressure	1896 kPa (275 psi)		1896 kPa (275 psi)			
Maximum Flow at Unloaded High Idle	155 L/m (41 gpm)		155 L/m (41 gpm)			
Control	3-function electrohydraulic (EH) joystick with proportional roller-angle function		3-function EH joystick with proportional roller for optional power-pitch function			
Electrical						
Blade Type	PAT / OSD					
Voltage	24 volts					
Capacity						
Battery	950 CCA					
Reserve	190 min.					
Alternator Rating	130 amp					
Lights	LED: grille mounted (2); rear mounted (2); roof mounted, forward facing (2); and engine compartment (1)					
Undercarriage	850L XLT	850L WLT	850L LGP	850L XLT	850L WLT	850L LGP
Blade Type	PAT	PAT	PAT	OSD	OSD	OSD
Tracks	Track frame with front and rear track guides and sprocket guard; John Deere DuraTrax™ features deep-heat-treated, sealed, and lubricated track links and through-hardened, sealed, and lubricated rollers for maximum wear resistance; sprockets are segmented; extreme-duty shoes are available (on some models) for severe applications					
Track Gauge	2134 mm (84 in.)	2286 mm (90 in.)	2438 mm (96 in.)	1880 mm (74 in.)	2032 mm (80 in.)	2184 mm (86 in.)
Grouser Width	610 mm (24 in.)	760 mm (30 in.)	910 mm (36 in.)	610 mm (24 in.)	760 mm (30 in.)	910 mm (36 in.)
Chain	Sealed and lubricated		Sealed and lubricated		Sealed and lubricated	
Shoes, Each Side	45	45	45	45	45	45
Track Rollers, Each Side	8	8	8	8	8	8
Track Length on Ground	3300 mm (130 in.)	3300 mm (130 in.)	3300 mm (130 in.)	3300 mm (130 in.)	3300 mm (130 in.)	3300 mm (130 in.)
Ground Contact Area	44 115 cm <sup>2</sup> (6,838 sq. in.)	54 963 cm <sup>2</sup> (8,519 sq. in.)	65 811 cm <sup>2</sup> (10,200 sq. in.)	44 115 cm <sup>2</sup> (6,838 sq. in.)	54 963 cm <sup>2</sup> (8,519 sq. in.)	65 811 cm <sup>2</sup> (10,200 sq. in.)
Ground Pressure	49.1 kPa (7.1 psi)	40.4 kPa (5.9 psi)	34.4 kPa (5.0 psi)	47.9 kPa (6.9 psi)	39.7 kPa (5.8 psi)	34.4 kPa (5.0 psi)
Track Pitch	203 mm (8 in.)	203 mm (8 in.)	203 mm (8 in.)	203 mm (8 in.)	203 mm (8 in.)	203 mm (8 in.)
Operator Station	850L XLT / 850L WLT / 850L LGP					
Blade Type	PAT / OSD					
ROPS (ISO 3471 – 2008)						
Serviceability						
Refill Capacities						
Fuel Tank with Lockable Cap	439 L (116 gal.)					
Cooling System with Recovery Tank	39.7 L (10.5 gal.)					
Engine Oil with Filter	25 L (6.6 gal.)					
Reservoir with Filter						
Transmission	105 L (27.6 gal.)					
Hydraulic	117 L (30.9 gal.)					
Diesel Exhaust Fluid (DEF) Reservoir	23.7 L (6.3 gal.)					

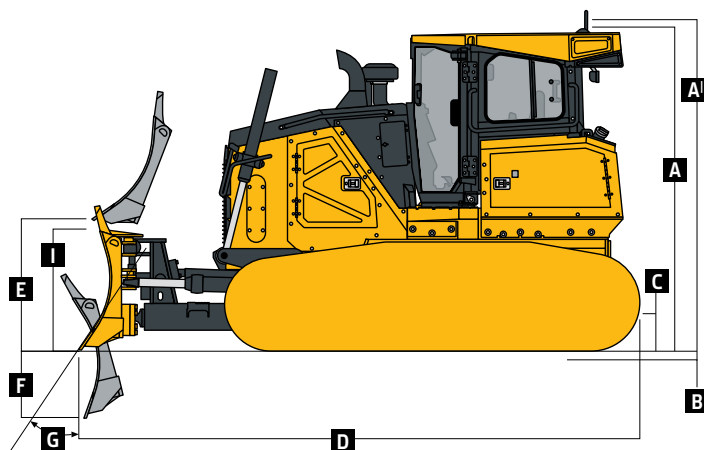
While general information, pictures, and descriptions are provided, some illustrations and text may include product options and accessories NOT AVAILABLE in all regions, and in some countries products and accessories may require modifications or additions to ensure compliance with the local regulations of those countries.

Operating Weights	850L XLT	850L WLT	850L LGP		850L XLT	850L WLT	850L LGP	
Blade Type	Power-Angle-Tilt (PAT)	Power-Angle-Tilt (PAT)	Power-Angle-Tilt (PAT)		Outside Dozer (OSD)	Outside Dozer (OSD)	Outside Dozer (OSD)	
Base Weight (with standard equipment, rollover protective structures [ROPS], full fuel tank, and 79-kg [175 lb.] operator)	22 126 kg (48,779 lb.)	22 793 kg (50,250 lb.)	22 827 kg (50,325 lb.)	23 275 kg (51,313 lb.)	23 299 kg (51,365 lb.)	21 581 kg (47,578 lb.)	22 407 kg (49,400 lb.)	23 295 kg (51,356 lb.)
Optional Components								
Front and Door Screens	50 kg (110 lb.)	50 kg (110 lb.)	50 kg (110 lb.)	50 kg (110 lb.)	50 kg (110 lb.)	50 kg (110 lb.)	50 kg (110 lb.)	50 kg (110 lb.)
Rear Screen	20 kg (44 lb.)	20 kg (44 lb.)	20 kg (44 lb.)	20 kg (44 lb.)	20 kg (44 lb.)	20 kg (44 lb.)	20 kg (44 lb.)	20 kg (44 lb.)
Side Screens	36 kg (78 lb.)	36 kg (78 lb.)	36 kg (78 lb.)	36 kg (78 lb.)	36 kg (78 lb.)	36 kg (78 lb.)	36 kg (78 lb.)	36 kg (78 lb.)
Condenser Guard (cab with air conditioner)	53 kg (117 lb.)	53 kg (117 lb.)	53 kg (117 lb.)	53 kg (117 lb.)	53 kg (117 lb.)	53 kg (117 lb.)	53 kg (117 lb.)	53 kg (117 lb.)
Limb Risers	481 kg (1,061 lb.)	481 kg (1,061 lb.)	481 kg (1,061 lb.)	481 kg (1,061 lb.)	481 kg (1,061 lb.)	481 kg (1,061 lb.)	481 kg (1,061 lb.)	481 kg (1,061 lb.)
Heavy-Duty Grille	30 kg (80 lb.)	30 kg (80 lb.)	30 kg (80 lb.)	30 kg (80 lb.)	30 kg (80 lb.)	30 kg (80 lb.)	30 kg (80 lb.)	30 kg (80 lb.)
Counterweight								
Front	355 kg (783 lb.)	355 kg (783 lb.)	355 kg (783 lb.)	355 kg (783 lb.)	355 kg (783 lb.)	355 kg (783 lb.)	355 kg (783 lb.)	355 kg (783 lb.)
Rear	449 kg (990 lb.)	449 kg (990 lb.)	449 kg (990 lb.)	449 kg (990 lb.)	449 kg (990 lb.)	449 kg (990 lb.)	449 kg (990 lb.)	449 kg (990 lb.)
Retrieval Hitch	52 kg (114 lb.)	52 kg (114 lb.)	52 kg (114 lb.)	52 kg (114 lb.)	52 kg (114 lb.)	52 kg (114 lb.)	52 kg (114 lb.)	52 kg (114 lb.)
Drawbar, Extended Rigid	130 kg (286 lb.)	130 kg (286 lb.)	130 kg (286 lb.)	130 kg (286 lb.)	130 kg (286 lb.)	130 kg (286 lb.)	130 kg (286 lb.)	130 kg (286 lb.)
Full-Length Rock Guards	242 kg (534 lb.)	242 kg (534 lb.)	242 kg (534 lb.)	242 kg (534 lb.)	242 kg (534 lb.)	222 kg (490 lb.)	222 kg (490 lb.)	242 kg (534 lb.)
Pre-Cleaner, Powered Cab Air	3 kg (7 lb.)	3 kg (7 lb.)	3 kg (7 lb.)	3 kg (7 lb.)	3 kg (7 lb.)	3 kg (7 lb.)	3 kg (7 lb.)	3 kg (7 lb.)
Track Shoes								
610-mm (24 in.) Moderate Duty	In base	–414 kg (–913 lb.)	–414 kg (–913 lb.)	–846 kg (–1,865 lb.)	–846 kg (–1,865 lb.)	In base	–414 kg (–913 lb.)	–846 kg (–1,865 lb.)
610-mm (24 in.) Extreme Duty	333 kg (734 lb.)	–81 kg (–179 lb.)	–81 kg (–179 lb.)	–513 kg (–1,131 lb.)	–513 kg (–1,131 lb.)	333 kg (734 lb.)	–81 kg (–179 lb.)	–513 kg (–1,131 lb.)
760-mm (30 in.) Moderate Duty	—	In base	In base	–432 kg (–952 lb.)	–432 kg (–952 lb.)	—	In base	–432 kg (–952 lb.)
760-mm (30 in.) Extreme Duty	—	459 kg (1,012 lb.)	459 kg (1,012 lb.)	27 kg (60 lb.)	27 kg (60 lb.)	—	459 kg (1,012 lb.)	27 kg (60 lb.)
910-mm (36 in.) Moderate Duty	—	—	—	In base	In base	—	—	In base
910-mm (36 in.) Extreme Duty	—	—	—	531 kg (1,171 lb.)	531 kg (1,171 lb.)	—	—	531 kg (1,171 lb.)
Waste Handler								
Waste-Handler Grille	—	—	—	–20.5 kg (–45 lb.)	—	—	—	–20.5 kg (–45 lb.)
Heavy-Duty (HD) Fender Guards	211 kg (466 lb.)	211 kg (466 lb.)	211 kg (466 lb.)	211 kg (466 lb.)	211 kg (466 lb.)	235 kg (518 lb.)	235 kg (518 lb.)	235 kg (518 lb.)
Final-Drive Trash Guards	70 kg (155 lb.)	70 kg (155 lb.)	70 kg (155 lb.)	70 kg (155 lb.)	70 kg (155 lb.)	70 kg (155 lb.)	70 kg (155 lb.)	70 kg (155 lb.)
Rotary Ejector Engine Air	9 kg (20 lb.)	9 kg (20 lb.)	9 kg (20 lb.)	9 kg (20 lb.)	9 kg (20 lb.)	9 kg (20 lb.)	9 kg (20 lb.)	9 kg (20 lb.)
Blade Trash Rack	—	—	—	208 kg (458 lb.)	—	—	—	269 kg (593 lb.)
Striker Bars								
Front	—	—	—	60 kg (132 lb.)	—	—	—	76 kg (168 lb.)
With Storage Box, Rear	—	—	—	720 kg (1,584 lb.)	—	—	—	720 kg (1,584 lb.)

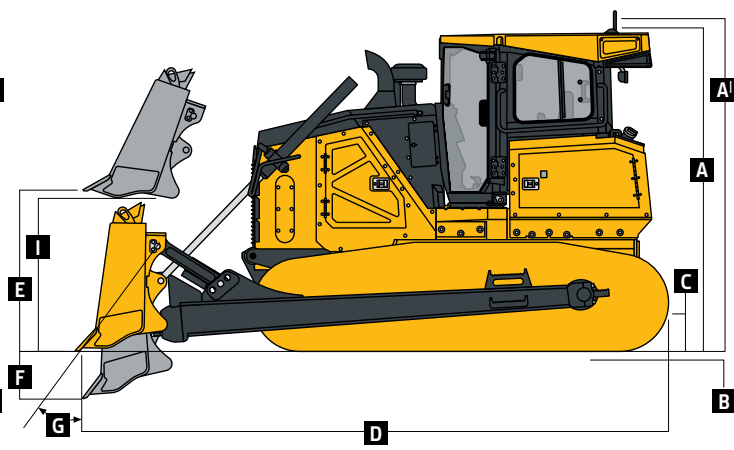
While general information, pictures, and descriptions are provided, some illustrations and text may include product options and accessories NOT AVAILABLE in all regions, and in some countries products and accessories may require modifications or additions to ensure compliance with the local regulations of those countries.

Machine Dimensions	850L XLT	850L WLT	850L LGP	850L XLT	850L WLT	850L LGP	
Blade Type	PAT	PAT	PAT	PAT	PAT	OSD	Mechanical Angle
<b>A</b> Overall Height to Roof (includes antenna base and grouser height)*	3344 mm (11 ft. 0 in.)*	3344 mm (11 ft. 0 in.)*	3344 mm (11 ft. 0 in.)*	3344 mm (11 ft. 0 in.)*	3344 mm (11 ft. 0 in.)*	3344 mm (11 ft. 0 in.)*	—
<b>A<sup>I</sup></b> Overall Height with Limb Risers (includes grousers)*	3438 mm (11 ft. 3 in.)*	3438 mm (11 ft. 3 in.)*	3438 mm (11 ft. 3 in.)*	3438 mm (11 ft. 3 in.)*	3438 mm (11 ft. 3 in.)*	3438 mm (11 ft. 3 in.)*	—
<b>B</b> Tread Depth with Single-Bar Grouser							
Moderate Duty	66 mm (2.6 in.)	66 mm (2.6 in.)	66 mm (2.6 in.)	66 mm (2.6 in.)	66 mm (2.6 in.)	66 mm (2.6 in.)	—
Extreme Duty	71 mm (2.8 in.)	71 mm (2.8 in.)	71 mm (2.8 in.)	71 mm (2.8 in.)	71 mm (2.8 in.)	71 mm (2.8 in.)	—
<b>C</b> Ground Clearance in Dirt	394 mm (15.5 in.)	394 mm (15.5 in.)	394 mm (15.5 in.)	394 mm (15.5 in.)	394 mm (15.5 in.)	394 mm (15.5 in.)	—
<b>D</b> Overall Length	5727 mm (225 in.)	5727 mm (225 in.)	5727 mm (225 in.)	5727 mm (225 in.)	5727 mm (225 in.)	5927 mm (233 in.)	6007 mm (236 in.)
With Standard Drawbar	5622 mm (221 in.)	5622 mm (221 in.)	5622 mm (221 in.)	5622 mm (221 in.)	5622 mm (221 in.)	5823 mm (229 in.)	5902 mm (232 in.)
With Extended Drawbar	5979 mm (235 in.)	5979 mm (235 in.)	5979 mm (235 in.)	5979 mm (235 in.)	5979 mm (235 in.)	6180 mm (243 in.)	6259 mm (246 in.)
<b>E</b> Blade Lift Height	1062 mm (42 in.)	1062 mm (42 in.)	1062 mm (42 in.)	1062 mm (42 in.)	1062 mm (42 in.)	1157 mm (46 in.)	1176 mm (46 in.)
<b>F</b> Blade Digging Depth	704 mm (28 in.)	704 mm (28 in.)	704 mm (28 in.)	704 mm (28 in.)	704 mm (28 in.)	596 mm (23 in.)	639 mm (25 in.)
<b>G</b> Blade Cutting-Edge Angle, Adjustable	54.8 to 59.9 deg.	54.8 to 59.9 deg.	54.8 to 59.9 deg.	54.8 to 59.9 deg.	54.8 to 59.9 deg.	52.5 to 60.5 deg.	58.5 deg.

\*With antenna whip removed.



850L XLT / 850L WLT / 850L LGP WITH POWER-ANGLE-TILT (PAT) BLADE



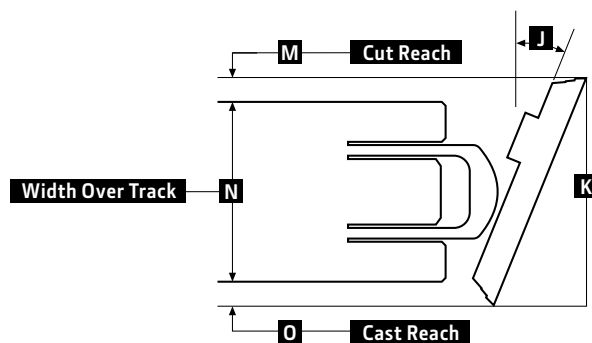
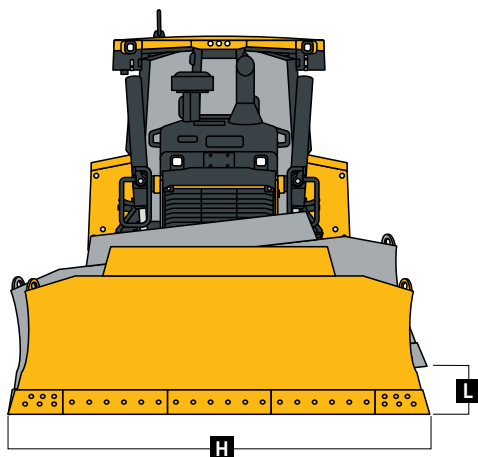
850L XLT / 850L WLT / 850L LGP WITH OUTSIDE DOZER (OSD) BLADE

Machine Dimensions (continued)		850L XLT	850L WLT	850L LGP		850L XLT	850L WLT	850L LGP	
Blade Type		Power-Angle-Tilt (PAT)	Power-Angle-Tilt (PAT)	Power-Angle-Tilt (PAT)		Outside Dozer (OSD)	Outside Dozer (OSD)	Outside Dozer (OSD)	
									Mechanical Angle
		<b>Straight</b>				<b>Straight</b>			
<b>H</b> Blade Width		3708 mm (146 in.) (12 ft. 2 in.)	4013 mm (158 in.) (13 ft. 2 in.)	4267 mm (168 in.) (14 ft. 0 in.)	4267 mm (168 in.) (14 ft. 0 in.)	4359 mm (172 in.) (14 ft. 4 in.)	—	3912 mm (154 in.) (12 ft. 10 in.)	—
<b>I</b> Blade Height		1229 mm (48 in.) (4 ft. 0 in.)	1229 mm (48 in.) (4 ft. 0 in.)	1229 mm (48 in.) (4 ft. 0 in.)	1229 mm (48 in.) (4 ft. 0 in.)	1229 mm (48 in.) (4 ft. 0 in.)	—	1264 mm (50 in.) (4 ft. 2 in.)	—
SAE Capacity		3.9 m <sup>3</sup> (5.2 cu. yd.)	4.2 m <sup>3</sup> (5.5 cu. yd.)	4.5 m <sup>3</sup> (5.9 cu. yd.)	4.5 m <sup>3</sup> (5.9 cu. yd.)	4.6 m <sup>3</sup> (6.0 cu. yd.)	—	4.8 m <sup>3</sup> (6.2 cu. yd.)	—
Capacity with Optional Trash Rack		—	—	9.9 m <sup>3</sup> (12.9 cu. yd.)	9.9 m <sup>3</sup> (12.9 cu. yd.)	—	—	—	—
Weight		1323 kg (2,917 lb.)	1402 kg (3,092 lb.)	1469 kg (3,239 lb.)	1469 kg (3,239 lb.)	1493 kg (3,291 lb.)	—	1606 kg (3,541 lb.)	—
With Optional Trash Rack		—	—	1677 kg (3,697 lb.)	1677 kg (3,697 lb.)	—	—	—	—
C-Frame Assembly Weight (without blade)		1695 kg (3,737 lb.)	1695 kg (3,737 lb.)	1695 kg (3,737 lb.)	1695 kg (3,737 lb.)	1695 kg (3,737 lb.)	—	1927 kg (4,248 lb.)	—
<b>J</b> Blade Angle		25 deg.	25 deg.	25 deg.	25 deg.	25 deg.	—	—	—
<b>K</b> Overall Width with Blade Angled		3358 mm (132 in.) (11 ft. 0 in.)	3634 mm (143 in.) (11 ft. 11 in.)	3864 mm (151 in.) (12 ft. 7 in.)	3864 mm (151 in.) (12 ft. 7 in.)	3948 mm (155 in.) (12 ft. 11 in.)	—	—	—
<b>L</b> Blade Tilt		471 mm (19 in.)	510 mm (20 in.)	541 mm (21 in.)	541 mm (21 in.)	553 mm (22 in.)	—	—	—
<b>M</b> Cut Reach		86 mm (3.4 in.)	73 mm (2.9 in.)	188 mm (7.4 in.)	37 mm (1.5 in.)	79 mm (3.1 in.)	—	—	455 mm (18 in.)
<b>N</b> Width Over Track		2744 mm (108 in.) (9 ft. 0 in.)	3046 mm (120 in.) (10 ft. 0 in.)	3046 mm (120 in.) (10 ft. 0 in.)	3348 mm (132 in.) (11 ft. 0 in.)	3348 mm (132 in.) (11 ft. 0 in.)	—	—	3099 mm (122 in.) (10 ft. 2 in.)
<b>O</b> Cast Reach		528 mm (21 in.)	515 mm (20 in.)	630 mm (25 in.)	479 mm (19 in.)	521 mm (21 in.)	—	—	921 mm (36 in.)
									Mechanical Angle
<b>Blade Type</b>		<b>Semi-U</b>				<b>Semi-U</b>			
<b>H</b> Blade Width		—	—	—	—	3266 mm (129 in.) (10 ft. 9 in.)	3571 mm (141 in.) (11 ft. 9 in.)	3875 mm (153 in.) (12 ft. 9 in.)	4935 mm (194 in.) (16 ft. 2 in.)
<b>I</b> Blade Height		—	—	—	—	1422 mm (56 in.) (4 ft. 8 in.)	1374 mm (54 in.) (4 ft. 6 in.)	1321 mm (52 in.) (4 ft. 4 in.)	1174 mm (46 in.) (3 ft. 10 in.)
SAE Capacity		—	—	—	—	5.6 m <sup>3</sup> (7.3 cu. yd.)	5.8 m <sup>3</sup> (7.6 cu. yd.)	6.2 m <sup>3</sup> (8.0 cu. yd.)	4.9 m <sup>3</sup> (6.4 cu. yd.)
Capacity with Optional Trash Rack		—	—	—	—	—	—	11.7 m <sup>3</sup> (15.3 cu. yd.)	—
Weight		—	—	—	—	1589 kg (3,503 lb.)	1669 kg (3,680 lb.)	1743 kg (3,843 lb.)	—
With Cylinders and Struts		—	—	—	—	—	—	—	2522 kg (5,560 lb.)
With Optional Trash Rack		—	—	—	—	—	—	2012 kg (4,436 lb.)	—
Push-Beam Assembly Weight (without blade)		—	—	—	—	1782 kg (3,929 lb.)	1825 kg (4,023 lb.)	1927 kg (4,248 lb.)	1698 kg (3,743 lb.)
<b>L</b> Blade Tilt (uses tilt jack)		—	—	—	—	807 mm (32 in.)	799 mm (31 in.)	782 mm (31 in.)	822 mm (32 in.)
<b>N</b> Width Over Track		—	—	—	—	2489 mm (98 in.) (8 ft. 2 in.)	2794 mm (110 in.) (9 ft. 2 in.)	3099 mm (122 in.) (10 ft. 2 in.)	—

While general information, pictures, and descriptions are provided, some illustrations and text may include product options and accessories NOT AVAILABLE in all regions, and in some countries products and accessories may require modifications or additions to ensure compliance with the local regulations of those countries.

## Machine Dimensions (continued)

850L XLT / 850L WLT / 850L LGP



## Rear Ripper

850L XLT / 850L WLT / 850L LGP

## Blade Type

PAT / OSD

Multi-shank (3) parallelogram ripper with hydraulic pitch adjustment and ESCO® ripper tips

Weight 2155 kg (4,750 lb.)

P Maximum Penetration 724 mm (28.5 in.)

Q Maximum Clearance Under Tip 610 mm (24 in.)

R Overall Length, Lowered Position 1626 mm (64 in.) (5 ft. 4 in.)

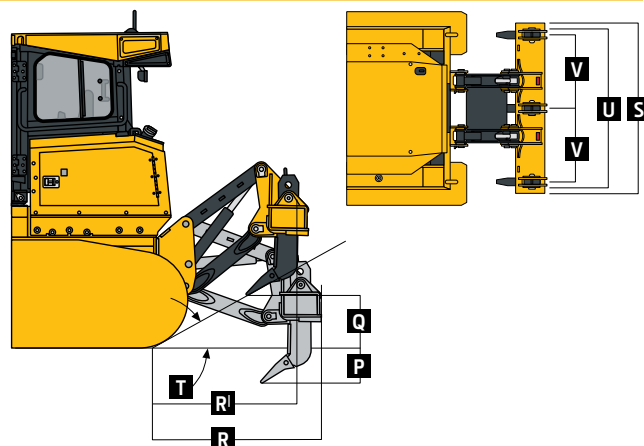
R<sup>l</sup> Overall Length, Raised Position 1525 mm (60 in.) (5 ft. 0 in.)

S Overall Beam Width 2400 mm (94 in.) (7 ft. 10 in.)

T Slope Angle (full raise) 24 deg.

U Ripping Width 2146 mm (85 in.) (7 ft. 1 in.)

V Distance Between Shanks 1041 mm (41 in.) (3 ft. 5 in.)



# Additional equipment

Key: ● Standard ▲ Optional or special

See your John Deere dealer for further information.

850L Engine
● Meets EPA Final Tier 4/EU Stage IV emissions
● John Deere PowerTech™ PSS 6090 9.0L engine
● Wet-sleeve cylinder liners
● Eco mode
● Exhaust stack, black
▲ Exhaust stack, chrome
● Turbocharged and air-to-air aftercooled
● Dual-element dry canister with external rotary ejector precleaner
● Programmable auto engine shutdown
● Automatic turbo cool-down timer
● Exhaust filter, under hood, with vertical stack
● Fuel filters with automatic electronic priming
▲ Severe-duty fuel filter
▲ Engine coolant heater, 120 volt
● 130-amp alternator
Cooling
● Hydraulically driven cooling fan, variable-speed suction type
● Engine cooling rated –37 deg. C (–34 deg. F)
● Automatic, programmable reversing fan
● Engine radiator, hydrostatic (HST) cooler, and hydraulic cooler, 7 fins per in.
● Single-plane non-stacked cooler design
Powertrain
● Dual-path HST transmission
● Reverse-speed ratios (100%, 115%, and 130% presets or operator defined)
● Operator-selectable decelerator function (hydrostats and engine or hydrostats only)
● Single-lever steering with counter-rotate function
● Full power turns with infinitely variable track speed
● HST (dynamic) service brakes
● Wet, multi-disc parking brake
● Remote diagnostic test ports
● Sealed dedicated transmission reservoir and filtration system separate from hydraulic system
Hydraulic System
● Load-sense electrohydraulic (EH) system with variable-displacement piston pump
● 2-spool EH control valve for outside dozer (OSD)
▲ 3-spool EH control valve for OSD with single auxiliary
● 3-spool EH control valve for Power-Angle-Tilt (PAT)
▲ 4-spool EH control valve for PAT with single auxiliary
● Grade-control-ready EH hydraulics
▲ SmartGrade™ 3D grade-control system

850L Hydraulic System (continued)
▲ SmartGrade Ready including Slope Control system
● Hydrau™ All-Season Hydraulic Oil, –15 deg. C to 50 deg. C (5 deg. F to 122 deg. F)
▲ Hydrau™ XR Hydraulic Oil, –40 deg. C to 40 deg. C (–40 deg. F to 104 deg. F)
▲ Threaded pitch jack (OSD only)
▲ Power pitch for programmable return to pitch settings (OSD only)
● Hydraulic pump, standard
▲ Hydraulic pump, high flow (for use with hydraulic winch)
▲ Cylinder rod scrapers (PAT only)
● Sealed dedicated hydraulic reservoir and filtration system separate from transmission system
Undercarriage
● Full-length, smooth-surface track frame
● Double-flange rollers
● Oscillating undercarriage
● Heavy-duty sealed and lubricated undercarriage
▲ Extended Life undercarriage with SC-2™ bushings
▲ Full-length rock guards
Operator's Station
● Enclosed cab with air conditioner/heater
▲ Automatic temperature control (ATC)
● Deluxe seat, cloth with heavy-duty air suspension
▲ Premium seat, leather accented, heat and ventilation, with heavy-duty air suspension
● AM/FM/Weather-Band (WB) radio
▲ Premium radio with Bluetooth, AM/FM/WB radio, remote auxiliary, and remote USB port
● Multifunction/multi-language 178-mm (7 in.) color LCD monitor: Tachometer, hour meter, transmission direction and speed (forward/reverse), exhaust filter status, ambient temperature, and clock
▲ Rearview camera
▲ HVAC-powered precleaner
● Backup alarm
● 12-volt accessory plug (1)
▲ Additional 12-volt accessory plug
▲ Fire extinguisher mounting bracket
● Keyless start with multiple security codes
● Front, door, and rear wipers and washers
Overall Vehicle
● Tilt operator station service access
● Environmental drain package
● Fluid-sampling ports

850L Overall Vehicle (continued)
● JDLink™ wireless machine communication system (available in specific countries; see your local dealer for details)
▲ Quick service ports (HST, hydraulic, and engine oil, and coolant)
▲ Fast-fuel system
● LED lights, grille mounted (2), front cab mounted (2), and rear mounted (2)
▲ Premium LED lights: grille mounted (2), high-output front cab mounted (4), and high-output rear mounted (4)
● Engine-compartment light
▲ Beacon light
▲ Trimble-ready interface package
▲ Leica-ready interface package
● Lockable master electrical disconnect switch
▲ Waste-handler package (LGP only)
▲ Large debris prescreen
▲ Recessed sprockets
▲ Final-drive trash guards (waste applications)
▲ Fender guards
● Foldout front grille
▲ Heavy-duty foldout front grille
▲ Forestry limb risers (sweeps)
▲ Cab screens, full enclosure
▲ Rear window screen
Attachments
▲ Rear ripper, parallelogram, 3 shank
▲ Rear ripper, parallelogram, 5 shank
▲ Counterweight, front, 355 kg (783 lb.)
▲ Rear counterweight (1 or 2)
▲ Retrieval hitch with pin
▲ Retrieval hitch with 1 or 2 counterweights
▲ Extended rigid drawbar
▲ Rear storage compartment with strikers
XLT WLT LGP 850L Shoes
● ▲ ▲ 610-mm (24 in.) moderate service with clipper corners
▲ ▲ ▲ 610-mm (24 in.) extreme service with clipper corners
● ▲ 760-mm (30 in.) moderate service with clipped corners
▲ ▲ 760-mm (30 in.) extreme service with clipped corners
▲ ▲ 760-mm (30 in.) extreme service with trapezoidal holes and clipped corners
● 910-mm (36 in.) moderate service with clipped corners
▲ 910-mm (36 in.) extreme service with clipped corners
▲ 910-mm (36 in.) extreme service with trapezoidal holes and clipped corners

While general information, pictures, and descriptions are provided, some illustrations and text may include product options and accessories NOT AVAILABLE in all regions, and in some countries products and accessories may require modifications or additions to ensure compliance with the local regulations of those countries.

Net engine power is with standard equipment including air cleaner, exhaust system, alternator, and cooling fan at test conditions specified per ISO9249. No derating is required up to 3050-m (10,000 ft.) altitude. Also available: winches, fair-leads, log arches, skidding grapples, trash packages, landfill protection packages, cable plows, side booms, field-installed cab for canopy, canopy heater, and fire-suppression systems. Specifications and design subject to change without notice. Wherever applicable, specifications are in accordance with SAE standards. Except where otherwise noted, these specifications are based on a unit with ROPS, full fuel tank, and 79-kg (175 lb.) operator. Operator station ROPS and FOPS certified.

