

210 P

Excavator



JOHN DEERE





ELEVATE YOUR WORK TO A NEW LEVEL

Whether you use it to dig footings, place pipe, load trucks, set stone, or many other jobsite duties, the 210 P-Tier Excavator can make quick work out of almost any task. Standard features designed with customer input in mind include Powerwise Plus™ technology that boosts performance on demand, intuitive operating controls, and reliably rugged undercarriage components. Options such as deluxe LED lighting, a stabilizing heavy-duty counterweight, and flexible grade-management solutions — including fully integrated SmartGrade™ — round out what you helped us imagine this mid-size excavator needed to meet and exceed your expectations.

210 P-TIER EXCAVATOR

FEATURES

See it to believe it

Optional camera array with LED-surround lighting integrated into the main monitor work together to supplement 270-degree visibility of the area around the machine.

Plan for productivity

Powerwise Plus hydraulic-management system balances engine performance and hydraulic flow for reliable operation. **High productivity** yields more power and faster hydraulic response to move more material. **Power** delivers smooth, balanced metering for normal operation. **Economy** reduces engine rpm and helps save fuel.

Designed to deliver long life

Improved front-joint durability including bushings on the boom end and foot, better front-piping clamping, and strengthened undercarriage components compared to earlier models help extend uptime and wear life. Larger front-piping diameter and electric cooling fans improve fuel efficiency by up to five percent.

Heavy-duty stability

Optional heavy-duty counterweight boosts machine stability when lifting or digging with a bucket, so you can confidently maximize material movement.

It's smart to get good grades

John Deere offers an economical way to adopt grade-management technology. Whether you're new to the game or want our most cutting-edge tech, there's a solution that will fit your needs. Choose 2D Excavator Grade Guidance or opt for fully integrated SmartGrade for 3D control including overdig protection and in-cab real-time distance to target. All grade-management solutions are factory ready and backed by your Deere dealer, including service, warranty, and financing.



GOGRADE.DEERE.COM
PROVIDES MOBILE-FRIENDLY
SETUP & OPERATION

Add some muscle

When the digging gets tough, simply press the standard power-boost button on the right-hand control for more hydraulic muscle.

Take a load off

Quiet and spacious cab features standard rearview camera for expansive all-round visibility. Sculpted mechanical-suspension high-back seat slides together or independent of the joystick console to help keep operators comfortably supported.

Now you know

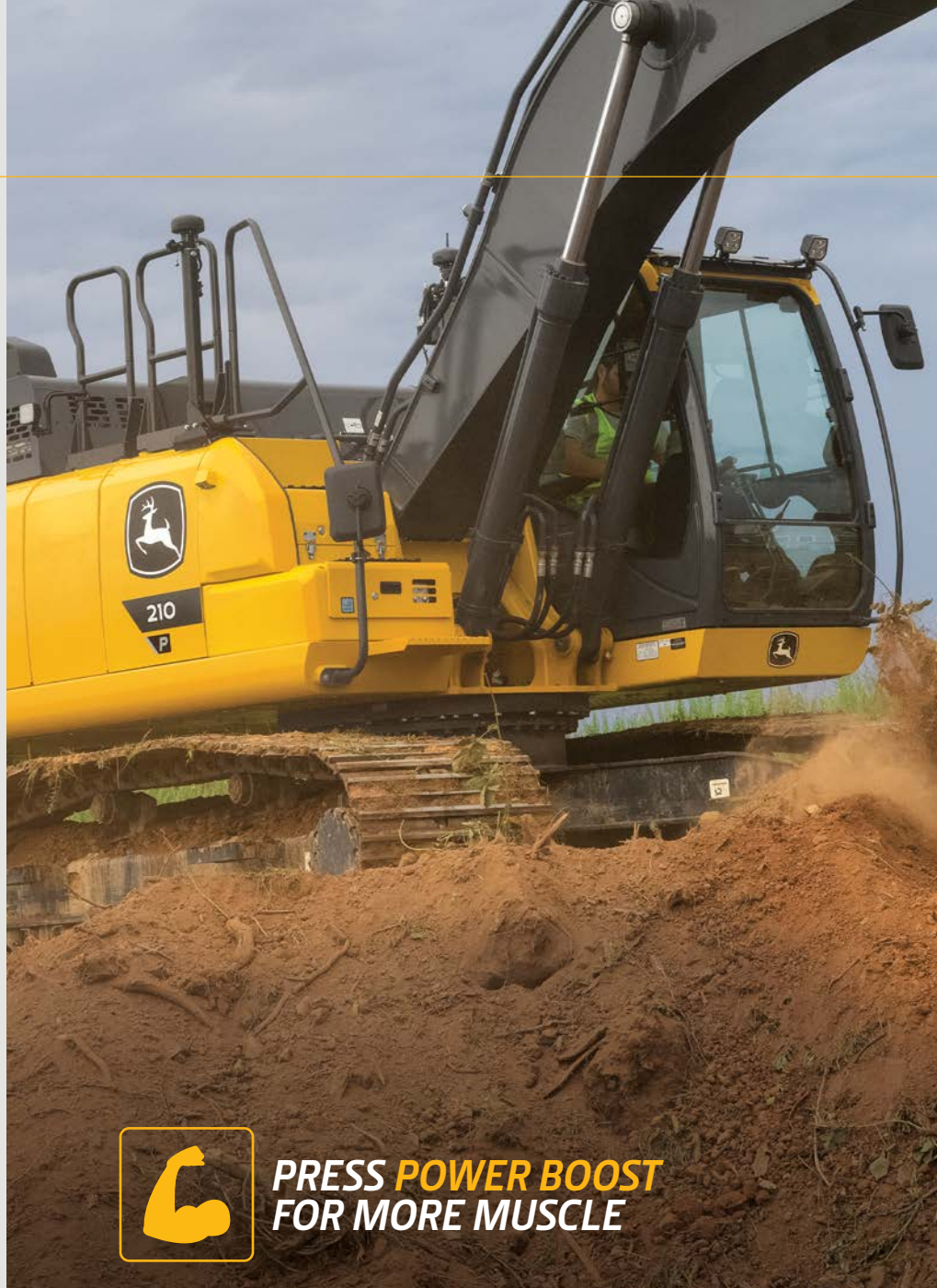
Multi-language LCD monitor and rotary dial provide intuitive access to a wealth of information and functions. Just turn and tap to select work mode, access operating info, check maintenance intervals, source diagnostic codes, adjust cab temperature, and tune the radio.

Control you can count on

Ergonomically correct short-throw pilot joysticks enable smooth, precise fingertip control with less movement or effort. Push buttons in the right lever allow predictable control of auxiliary hydraulic flow for operating attachments.

Shed some light on it

Optional deluxe LED lights at cab front and rear, boom, and toolbox shine when your workday extends beyond daylight. They use less power, output more light, and last longer than halogens, and are easy to replace when necessary.



**PRESS POWER BOOST
FOR MORE MUSCLE**



210 P-TIER EXCAVATOR



Simplify your routine

Large fuel tank and 500- and 5,000-hour engine and hydraulic oil-service intervals decrease downtime for routine maintenance. Fluid-level sight gauges are conveniently located and can be checked at a glance.

Connected machines

John Deere construction equipment comes with in-base connectivity — free from subscriptions or annual renewals. Analyze critical machine data, track utilization, review diagnostic alerts, and more from **the John Deere Operations Center™**. The Operations Center also enables John Deere Connected Support™, which uses data from thousands of connected machines to proactively address issues before they arise. With your approval, your dealer can also remotely monitor machine health, diagnose problems, and even update machine software without a trip to the jobsite.*

* Availability varies by region and product. Options not available in every country.





While general information, pictures, and descriptions are provided, some illustrations and text may include product options and accessories NOT AVAILABLE in all regions, and in some countries products and accessories may require modifications or additions to ensure compliance with the local regulations of those countries.

Engine	210 P-TIER		
	Base engine for use in U.S., U.S. Territories, and Canada		
Manufacturer and Model	John Deere PowerTech™ PVS 6.8L 6068HT106		
Non-Road Emission Standard	EPA Final Tier 4/EU Stage IV		
Net Rated Power (ISO 9249)	119 kW (159 hp) at 2,000 rpm		
Cylinders	6		
Displacement	6.8L (415 cu. in.)		
Off-Level Capacity	70% (35 deg.)		
Aspiration	Turbocharged, air-to-air charge-air cooler		
Cooling	Reversing electric variable-speed fan drive		
Powertrain	2-speed propel with automatic shift		
Maximum Travel Speed			
Low	3.5 km/h (2.2 mph)		
High	5.5 km/h (3.4 mph)		
Drawbar Pull (turtle mode)	20 700 kg (45,636 lb.)		
Hydraulics	Open center, load sensing		
Main Pumps	2 variable-displacement axial-piston pumps		
Maximum Rated Flow	212 L/m (56 gpm) x 2		
Pilot Pump	1 gear		
Maximum Rated Flow	30 L/m (7.9 gpm)		
Pressure Setting	4000 kPa (580 psi)		
System Operating Pressure	Circuits		
Implement	34 300 kPa (4,975 psi)		
Travel	35 500 kPa (5,149 psi)		
Swing	33 300 kPa (4,830 psi)		
Power Boost	38 000 kPa (5,511 psi)		
Controls	Pilot levers, short stroke, low-effort hydraulic pilot controls with shutoff lever		
Cylinders	<i>Bore</i>	<i>Rod Diameter</i>	<i>Stroke</i>
Boom (2)	120 mm (4.7 in.)	85 mm (3.4 in.)	1260 mm (49.6 in.)
Arm (1)	135 mm (5.3 in.)	95 mm (3.7 in.)	1475 mm (58.1 in.)
Bucket (1)	115 mm (4.5 in.)	80 mm (3.2 in.)	1060 mm (41.7 in.)
Electrical	Number of Batteries (12 volt)		
Battery Capacity	2		
Alternator Rating	950 CCA		
Work Lights	300 amp		
	2 LED (1 on left side of boom, 1 on frame)		
Undercarriage	Rollers (each side)		
Carrier	2		
Track	8		
Shoes, Triple Semi-Grousers (each side)	49		
Track	Adjustment		
Guides	Hydraulic		
Chain	Center		
	Sealed and lubricated		

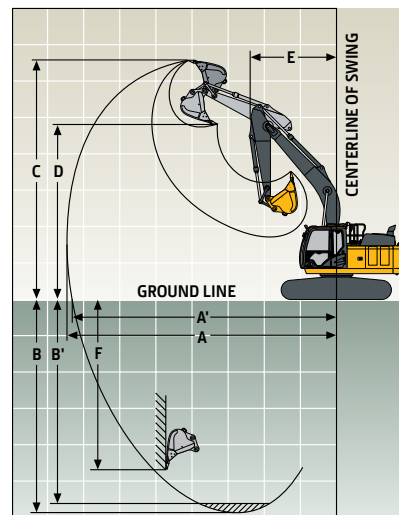
210 P-TIER EXCAVATOR SPECIFICATIONS

210

P

While general information, pictures, and descriptions are provided, some illustrations and text may include product options and accessories NOT AVAILABLE in all regions, and in some countries products and accessories may require modifications or additions to ensure compliance with the local regulations of those countries.

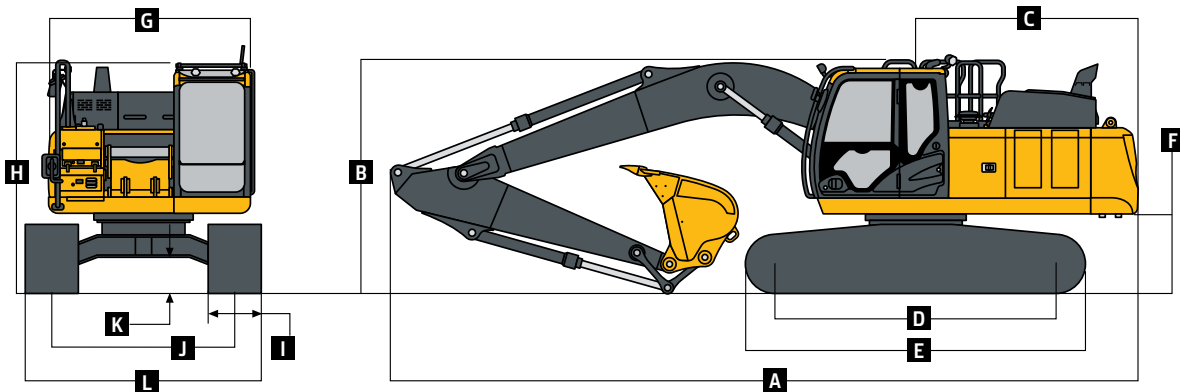
Ground Pressure		210 P-TIER	
		<i>With Standard Counterweight and Boom</i>	<i>With Heavy Counterweight and Heavy-Duty (HD) Boom</i>
Triple Semi-Grouser Shoes			
600 mm (24 in.)	44.4 kPa (6.44 psi)	45.7 kPa (6.62 psi)	
700 mm (28 in.)	39.3 kPa (5.71 psi)	39.8 kPa (5.78 psi)	
800 mm (32 in.)	34.4 kPa (4.99 psi)	34.3 kPa (4.98 psi)	
Swing Mechanism			
Swing			
Speed	13.3 rpm		
Torque	68 900 Nm (50,662 lb.-ft.)		
Serviceability			
Refill Capacities		Refill Capacities (continued)	
Fuel Tank	403 L (106.5 gal.)	Gearbox	
Cooling System	35.4 L (9.4 gal.)	Swing	6.2 L (6.6 qt.)
Engine Oil With Filter	20.8 L (5.5 gal.)	Propel (each)	7.8 L (8.2 qt.)
Hydraulic Tank	135 L (35.7 gal.)	Pump Drive	1 L (1.1 qt.)
Hydraulic System	240 L (63.4 gal.)	Diesel Exhaust Fluid (DEF) Tank	26.6 L (7.0 gal.)
Operating Weights			
With full fuel tank; 79-kg (175 lb.) operator; 1065-mm (42 in.), 0.91-m ³ (1.19 cu. yd.), 886-kg (1,951 lb.) general-purpose bucket; and 2.91-m (9 ft. 7 in.) arm			
	<i>With Standard Counterweight and Boom</i>	<i>With Heavy Counterweight and HD Boom</i>	
With Triple Semi-Grouser Shoes			
800 mm (32 in.)	23 560 kg (51,940 lb.)	24 260 kg (53,483 lb.)	
700 mm (28 in.)	23 247 kg (51,251 lb.)	23 947 kg (52,794 lb.)	
600 mm (24 in.)	22 857 kg (50,391 lb.)	23 557 kg (51,934 lb.)	
Component Weights			
LC Undercarriage With Triple Semi-Grouser Shoes			
600 mm (24 in.)	7335 kg (16,156 lb.)	7335 kg (16,156 lb.)	
700 mm (28 in.)	7725 kg (17,015 lb.)	7725 kg (17,015 lb.)	
800 mm (32 in.)	8038 kg (17,705 lb.)	8038 kg (17,705 lb.)	
1-Piece Boom (with arm cylinder)	1731 kg (3,813 lb.)	1781 kg (3,923 lb.)	
2.91 m (9 ft. 7 in.) Arm With Bucket	1001 kg (2,205 lb.)	1001 kg (2,205 lb.)	
Cylinder and Linkage			
Boom-Lift Cylinders (2), Total Weight	354 kg (780 lb.)	354 kg (780 lb.)	
Counterweight	4250 kg (9,370 lb.)	4850 kg (10,692 lb.)	
Operating Dimensions			
Arm Length	2.91 m (9 ft. 7 in.)		
Arm Digging Force			
SAE	110 kN (24,729 lbf)		
ISO	114 kN (25,628 lbf)		
Bucket Digging Force			
SAE	141 kN (31,698 lbf)		
ISO	158 kN (35,520 lbf)		
A Maximum Reach	9.92 m (32 ft. 7 in.)		
A' Maximum Reach at Ground Level	9.75 m (32 ft. 0 in.)		
B Maximum Digging Depth	6.67 m (21 ft. 11 in.)		
B' Maximum Digging Depth at 2.44-m (8 ft. 0 in.) Flat Bottom	6.50 m (21 ft. 4 in.)		
C Maximum Cutting Height	10.04 m (32 ft. 11 in.)		
D Maximum Dumping Height	7.18 m (23 ft. 7 in.)		
E Minimum Swing Radius	3.18 m (10 ft. 5 in.)		
F Maximum Vertical Wall	5.99 m (19 ft. 8 in.)		



210 P-TIER

While general information, pictures, and descriptions are provided, some illustrations and text may include product options and accessories NOT AVAILABLE in all regions, and in some countries products and accessories may require modifications or additions to ensure compliance with the local regulations of those countries.

Machine Dimensions	210 P-TIER
Arm Length	2.91 m (9 ft. 7 in.)
A Overall Length	9.66 m (31 ft. 8 in.)
B Overall Height	3.01 m (9 ft. 11 in.)
C Rear-End Length/Swing Radius	2.89 m (9 ft. 6 in.)
D Distance Between Idler/Sprocket Centerline	3.66 m (12 ft. 0 in.)
E Undercarriage Length	4.47 m (14 ft. 8 in.)
F Counterweight Clearance	1030 mm (3 ft. 5 in.)
G Upperstructure Width	2.71 m (8 ft. 11 in.)
H Cab Height	2.95 m (9 ft. 8 in.)
I Track Width With Triple Semi-Grouser Shoes	600 mm (24 in.) / 700 mm (28 in.) / 800 mm (32 in.)
J Gauge Width	2.39 m (7 ft. 10 in.)
K Ground Clearance	450 mm (17.72 in.)
L Overall Width With Triple Semi-Grouser Shoes	
600 mm (24 in.)	2.99 m (9 ft. 10 in.)
700 mm (28 in.)	3.09 m (10 ft. 2 in.)
800 mm (32 in.)	3.19 m (10 ft. 6 in.)



Lift Capacities With Standard Counterweight and Boom

Boldface type indicates hydraulically limited capacity; lightface type indicates stability-limited capacities, in kg (lb.). Ratings at arm tip; standard counterweight; standard gauge; and situated on firm, uniform supporting surface. Total load includes weight of cables, hook, etc. Figures do not exceed 87 percent of hydraulic capacities or 75 percent of weight needed to tip machine. All lift capacities are based on ISO 10567.

LOAD POINT HEIGHT	HORIZONTAL DISTANCE FROM CENTERLINE OF ROTATION									
	1.5 m (5 ft.)		3.0 m (10 ft.)		4.5 m (15 ft.)		6.0 m (20 ft.)		7.5 m (25 ft.)	
	Over Front	Over Side	Over Front	Over Side	Over Front	Over Side	Over Front	Over Side	Over Front	Over Side
<i>With 2.91-m (9 ft. 7 in.) arm and 600-mm (24 in.) triple semi-grouser shoes, less bucket</i>										
6.0 m (20 ft.)							5220 (11,480)	5220 (11,480)		
4.5 m (15 ft.)					6610 (14,290)	6610 (14,290)	5770 (12,580)	5370 (11,570)	5390 (11,830)	3790 (8,170)
3.0 m (10 ft.)					8520 (18,370)	7800 (16,850)	6640 (14,420)	5130 (11,070)	5610 (12,090)	3690 (7,960)
1.5 m (5 ft.)					10 260 (22,150)	7300 (15,770)	7520 (16,300)	4890 (10,560)	5490 (11,830)	3580 (7,720)
Ground Line			4840 (11,200)	4840 (11,200)	11 110 (24,080)	7040 (15,170)	7470 (16,100)	4720 (10,200)	5390 (11,630)	3490 (7,540)
-1.5 m (-5 ft.)	5480 (12,290)	5480 (12,290)	9100 (20,710)	9100 (20,710)	11 080 (24,030)	6960 (15,010)	7390 (15,930)	4650 (10,050)	5360 (11,580)	3460 (7,490)
-3.0 m (-10 ft.)	9970 (22,420)	9970 (22,420)	14 390 (31,190)	13 610 (29,180)	10 220 (22,110)	7020 (15,150)	7430 (16,020)	4690 (10,140)		
-4.5 m (-15 ft.)			11 250 (24,090)	11 250 (24,090)	8120 (17,270)	7240 (15,630)				
<i>With 2.91-m (9 ft. 7 in.) arm and 700-mm (28 in.) triple semi-grouser shoes, less bucket</i>										
6.0 m (20 ft.)							5220 (11,480)	5220 (11,480)		
4.5 m (15 ft.)					6610 (14,290)	6610 (14,290)	5770 (12,580)	5450 (11,750)	5390 (11,830)	3860 (8,300)
3.0 m (10 ft.)					8520 (18,370)	7920 (17,100)	6640 (14,420)	5210 (11,250)	5710 (12,310)	3750 (8,090)
1.5 m (5 ft.)					10 260 (22,150)	7420 (16,030)	7520 (16,300)	4970 (10,740)	5590 (12,050)	3640 (7,850)
Ground Line			4840 (11,200)	4840 (11,200)	11 110 (24,080)	7160 (15,430)	7610 (16,390)	4810 (10,380)	5490 (11,850)	3550 (7,670)
-1.5 m (-5 ft.)	5480 (12,290)	5480 (12,290)	9100 (20,710)	9100 (20,710)	11 080 (24,030)	7080 (15,260)	7530 (16,220)	4740 (10,230)	5460 (11,800)	3530 (7,630)
-3.0 m (-10 ft.)	9970 (22,420)	9970 (22,420)	14 390 (31,190)	13 830 (29,660)	10 220 (22,110)	7140 (15,400)	7570 (16,320)	4770 (10,310)		
-4.5 m (-15 ft.)			11 250 (24,090)	11 250 (24,090)	8120 (17,270)	7360 (15,890)				

While general information, pictures, and descriptions are provided, some illustrations and text may include product options and accessories NOT AVAILABLE in all regions, and in some countries products and accessories may require modifications or additions to ensure compliance with the local regulations of those countries.

210 P-TIER

Lift Capacities With Standard

Counterweight and Boom (continued)

210 P-TIER

Boldface type indicates hydraulically limited capacity; **lightface type** indicates stability-limited capacities, in kg (lb.). Ratings at arm tip; standard counterweight; standard gauge; and situated on firm, uniform supporting surface. Total load includes weight of cables, hook, etc. Figures do not exceed 87 percent of hydraulic capacities or 75 percent of weight needed to tip machine. All lift capacities are based on ISO 10567.

LOAD POINT HEIGHT	HORIZONTAL DISTANCE FROM CENTERLINE OF ROTATION									
	1.5 m (5 ft.)		3.0 m (10 ft.)		4.5 m (15 ft.)		6.0 m (20 ft.)		7.5 m (25 ft.)	
	Over Front	Over Side	Over Front	Over Side	Over Front	Over Side	Over Front	Over Side	Over Front	Over Side
<i>With 2.91-m (9 ft. 7 in.) arm and 800-mm (32 in.) triple semi-grouser shoes, less bucket</i>										
6.0 m (20 ft.)							5220	5220		
							(11,480)	(11,480)		
4.5 m (15 ft.)					6610	6610	5770	5510	5390	3900
					(14,290)	(14,290)	(12,580)	(11,880)	(11,830)	(8,400)
3.0 m (10 ft.)					8520	8010	6640	5270	5750	3800
					(18,370)	(17,300)	(14,420)	(11,380)	(12,470)	(8,190)
1.5 m (5 ft.)					10 260	7510	7520	5030	5660	3690
					(22,150)	(16,220)	(16,300)	(10,870)	(12,210)	(7,950)
Ground Line			4840	4840	11 110	7250	7710	4870	5570	3600
			(11,200)	(11,200)	(24,080)	(15,620)	(16,610)	(10,510)	(12,010)	(7,770)
-1.5 m (-5 ft.)	5480	5480	9100	9100	11 080	7170	7630	4800	5540	3570
	(12,290)	(12,290)	(20,710)	(20,710)	(24,030)	(15,460)	(16,440)	(10,360)	(11,960)	(7,730)
-3.0 m (-10 ft.)	9970	9970	14 390	14 000	10 220	7230	7590	4830		
	(22,420)	(22,420)	(31,190)	(30,020)	(22,110)	(15,600)	(16,340)	(10,440)		
-4.5 m (-15 ft.)			11 250	11 250	8120	7450				
			(24,090)	(24,090)	(17,270)	(16,080)				

Lift Capacities With Heavy Counterweight and Heavy-Duty (HD) Boom

Boldface type indicates hydraulically limited capacity; **lightface type** indicates stability-limited capacities, in kg (lb.). Ratings at arm tip; heavy counterweight; standard gauge; and situated on firm, uniform supporting surface. Total load includes weight of cables, hook, etc. Figures do not exceed 87 percent of hydraulic capacities or 75 percent of weight needed to tip machine. All lift capacities are based on ISO 10567.

LOAD POINT HEIGHT	HORIZONTAL DISTANCE FROM CENTERLINE OF ROTATION									
	1.5 m (5 ft.)		3.0 m (10 ft.)		4.5 m (15 ft.)		6.0 m (20 ft.)		7.5 m (25 ft.)	
	Over Front	Over Side	Over Front	Over Side	Over Front	Over Side	Over Front	Over Side	Over Front	Over Side
<i>With 2.91-m (9 ft. 7 in.) arm and 600-mm (24 in.) triple semi-grouser shoes, less bucket</i>										
6.0 m (20 ft.)							5150	5150		
							(11,320)	(11,320)		
4.5 m (15 ft.)					6530	6530	5700	5670	5320	4010
					(14,110)	(14,110)	(12,410)	(12,230)	(11,680)	(8,630)
3.0 m (10 ft.)					8420	8260	6560	5420	5670	3900
					(18,160)	(17,830)	(14,230)	(11,710)	(12,390)	(8,420)
1.5 m (5 ft.)					10 150	7740	7420	5180	5770	3790
					(21,910)	(16,710)	(16,100)	(11,180)	(12,430)	(8,170)
Ground Line			4800	4800	11 000	7470	7860	5010	5670	3700
			(11,120)	(11,120)	(23,820)	(16,100)	(16,940)	(10,810)	(12,230)	(7,980)
-1.5 m (-5 ft.)	5430	5430	9060	9060	10 960	7390	7780	4930	5640	3670
	(12,190)	(12,190)	(20,630)	(20,630)	(23,780)	(15,930)	(16,760)	(10,650)	(12,180)	(7,940)
-3.0 m (-10 ft.)	9930	9930	14 240	14 240	10 100	7460	7490	4970		
	(22,330)	(22,330)	(30,870)	(30,870)	(21,860)	(16,080)	(16,130)	(10,750)		
-4.5 m (-15 ft.)			11 110	11 110	8010	7680				
			(23,800)	(23,800)	(17,040)	(16,590)				
<i>With 2.91-m (9 ft. 7 in.) arm and 700-mm (28 in.) triple semi-grouser shoes, less bucket</i>										
6.0 m (20 ft.)							5150	5150		
							(11,320)	(11,320)		
4.5 m (15 ft.)					6530	6530	5700	5700	5320	4070
					(14,110)	(14,110)	(12,410)	(12,410)	(11,680)	(8,770)
3.0 m (10 ft.)					8420	8370	6560	5510	5670	3970
					(18,160)	(18,080)	(14,230)	(11,890)	(12,390)	(8,550)
1.5 m (5 ft.)					10 150	7860	7420	5260	5870	3850
					(21,910)	(16,970)	(16,100)	(11,360)	(12,650)	(8,300)
Ground Line			4800	4800	11 000	7590	8000	5090	5770	3760
			(11,120)	(11,120)	(23,820)	(16,360)	(17,230)	(10,980)	(12,450)	(8,120)
-1.5 m (-5 ft.)	5430	5430	9060	9060	10 960	7510	7920	5020	5740	3730
	(12,190)	(12,190)	(20,630)	(20,630)	(23,780)	(16,190)	(17,060)	(10,830)	(12,400)	(8,070)
-3.0 m (-10 ft.)	9930	9930	14 240	14 240	10 100	7580	7490	5050		
	(22,330)	(22,330)	(30,870)	(30,870)	(21,860)	(16,340)	(16,130)	(10,920)		
-4.5 m (-15 ft.)			11 110	11 110	8010	7800				
			(23,800)	(23,800)	(17,040)	(16,850)				

210 P-TIER

While general information, pictures, and descriptions are provided, some illustrations and text may include product options and accessories NOT AVAILABLE in all regions, and in some countries products and accessories may require modifications or additions to ensure compliance with the local regulations of those countries.

Lift Capacities With Heavy Counterweight and Heavy-Duty (HD) Boom (continued)

210 P-TIER

Boldface type indicates hydraulically limited capacity; lightface type indicates stability-limited capacities, in kg (lb.). Ratings at arm tip; heavy counterweight; standard gauge; and situated on firm, uniform supporting surface. Total load includes weight of cables, hook, etc. Figures do not exceed 87 percent of hydraulic capacities or 75 percent of weight needed to tip machine. All lift capacities are based on ISO 10567.

HORIZONTAL DISTANCE FROM CENTERLINE OF ROTATION

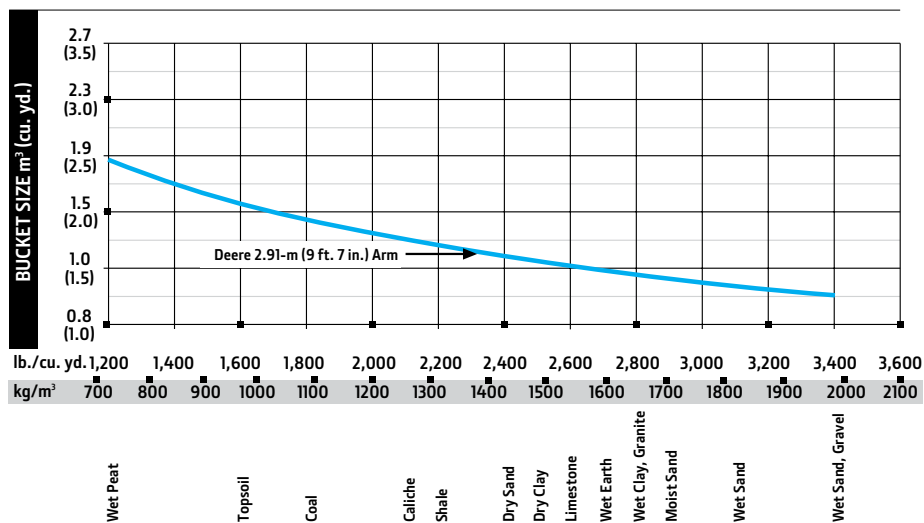
LOAD POINT HEIGHT	1.5 m (5 ft.)		3.0 m (10 ft.)		4.5 m (15 ft.)		6.0 m (20 ft.)		7.5 m (25 ft.)	
	Over Front	Over Side	Over Front	Over Side	Over Front	Over Side	Over Front	Over Side	Over Front	Over Side
<i>With 2.91-m (9 ft. 7 in.) arm and 800-mm (32 in.) triple semi-grouser shoes, less bucket</i>										
6.0 m (20 ft.)							5150 (11,320)	5150 (11,320)		
4.5 m (15 ft.)					6530 (14,110)	6530 (14,110)	5700 (12,410)	5700 (12,410)	5320 (11,680)	4120 (8,870)
3.0 m (10 ft.)					8420 (18,160)	8420 (18,160)	6560 (14,230)	5570 (12,020)	5670 (12,390)	4010 (8,650)
1.5 m (5 ft.)					10 150 (21,910)	7950 (17,160)	7420 (16,100)	5320 (11,490)	5950 (12,820)	3890 (8,400)
Ground Line			4800 (11,120)	4800 (11,120)	11 000 (23,820)	7680 (16,550)	8000 (17,230)	5150 (11,120)	5850 (12,610)	3800 (8,220)
-1.5 m (-5 ft.)	5430 (12,190)	5430 (12,190)	9060 (20,630)	9060 (20,630)	10 960 (23,780)	7600 (16,380)	8020 (17,280)	5080 (10,960)	5820 (12,560)	3780 (8,170)
-3.0 m (-10 ft.)	9930 (22,330)	9930 (22,330)	14 240 (30,870)	14 240 (30,870)	10 100 (21,860)	7670 (16,530)	7490 (16,130)	5110 (11,060)		
-4.5 m (-15 ft.)			11 110 (23,800)	11 110 (23,800)	8010 (17,040)	7890 (17,040)				

Buckets

A full line of buckets is offered to meet a wide variety of applications. Digging forces are with power boost. Buckets are equipped with John Deere TK-Series Bucket Teeth standard. Replaceable cutting edges and a variety of teeth are available through John Deere Parts. Optional side cutters add 150 mm (6 in.) to bucket widths. Capacities are SAE heaped ratings.

Type Bucket	Bucket Width		Bucket Capacity		Bucket Weight		Bucket Dig Force		Arm Dig Force		Bucket Tip Radius		Number of Teeth
	mm	in.	m ³	cu. yd.	kg	lb.	kN	lbf	kN	lbf	mm	in.	
Heavy Duty	914	36	0.69	0.90	704	1,551	164.4	36,948	115.1	25,869	1422	56	5
	1067	42	0.83	1.09	768	1,692	164.4	36,948	115.1	25,869	1422	56	5
	1219	48	0.99	1.29	850	1,873	164.4	36,948	115.1	25,869	1422	56	6
Heavy Duty High Capacity	610	24	0.43	0.56	660	1,453	161.5	36,300	114.4	25,719	1448	57	4
	760	30	0.58	0.76	723	1,593	161.5	36,300	114.4	25,719	1448	57	4
	914	36	0.74	0.97	829	1,825	161.5	36,300	114.4	25,719	1448	57	5
	1067	42	0.91	1.19	924	2,035	161.5	36,300	114.4	25,719	1448	57	5

Bucket Selection Guide*



* Contact your John Deere dealer for optimum bucket and attachment selections. These recommendations are for general conditions and average use. Does not include optional equipment such as thumbs or couplers. Larger buckets may be possible when using light materials, for flat and level operations, less compacted materials, and volume loading applications such as mass-excavation applications in ideal conditions. Smaller buckets are recommended for adverse conditions such as off-level applications, rocks, and uneven surfaces. Bucket capacity indicated is SAE heaped.

Additional equipment

Key: ● Standard ▲ Optional or special
See your John Deere dealer for further information.

210 P Engine
● Auto-idle system
● Automatic belt-tension device
● Batteries (2 – 12 volt)
● Coolant recovery tank
● Dual-element dry-type air filter
● Electronic engine control
● Enclosed fan guard (conforms to SAE J1308)
● Engine coolant to –37 deg. C (–34 deg. F)
● Fuel filter with water separator
● Fuel shutoff valve
● Full-flow oil filter
● Turbocharger with charge-air cooler
▲ Reversing electric variable-speed fan drive
● 500-hour engine-oil-change interval
● 70% (35 deg.) off-level capability
● Engine-oil-sampling valve
● Programmable auto shutdown
▲ Chrome exhaust stack
▲ Severe-duty fuel filter
▲ Engine coolant heater
▲ Engine air precleaner
Hydraulic System
● Reduced-drift valve for boom down, arm in
● Auxiliary hydraulic valve section
● Spring-applied, hydraulically released automatic swing brake
● Auxiliary hydraulic-flow adjustments through monitor
● Auto power lift
● 5,000-hour hydraulic-oil-change interval
● Hydraulic-oil-sampling valve
● Control pattern-change valve
● Powertech Plus™ hydraulic-management system
▲ Auxiliary hydraulics with combination piping
▲ Auxiliary pilot and electric controls
▲ Hydraulic filter restriction indicator kit
▲ Load-lowering control device
▲ Single-pedal propel control
▲ Dual pump-flow combiner
▲ High-flow auxiliary hydraulic lines with dual stop valves
Undercarriage
● Planetary drive with axial piston motors
● Propel motor shields
● Spring-applied, hydraulically released automatic propel brake
● Track guides, front idler and center
● 2-speed propel with automatic shift
● Upper carrier rollers (2)
● Sealed and lubricated track chain
● Lower frame bottom cover
▲ Triple semi-grouser shoes, 600 mm (24 in.)
▲ Triple semi-grouser shoes, 700 mm (28 in.)
▲ Triple semi-grouser shoes, 800 mm (32 in.)
▲ Additional track guide (for machine ordered with heavy counterweight and heavy-duty [HD] boom)

210 P Upperstructure
● Right-hand and left-hand mirrors
● Vandal locks with ignition key: Cab door / Service doors / Toolbox
● Debris screen in side panel
● Remote-mounted engine oil and fuel filters
● Service handrails
▲ Heavy counterweight (requires HD boom)
Front Attachments
● Centralized lubrication system
● Dirt seals on all bucket pins
● Less boom and arm
● Oil-impregnated bushings
● Reinforced resin thrust plates
● Tungsten carbide thermal coating on arm-to-bucket joint
● Boom, 5.7-m (18 ft. 8 in.) standard duty
▲ Boom, 5.7-m (18 ft. 8 in.) HD
▲ Arm, 2.91 m (9 ft. 7 in.)
▲ Attachment quick-couplers
▲ Boom cylinder with plumbing to mainframe for less boom and arm
▲ Buckets: HD / Side cutters and teeth
▲ Hydraulic thumb
Operator's Station
● Meets ISO 12117-2 for ROPS
● Adjustable independent-control positions (levers-to-seat, seat-to-pedals)
● AM/FM radio
● Auto climate control/air conditioner/heater/pressurizer
● Built-in Operator's Manual storage compartment and manual
● Cell-phone power outlet, 12 volt, 60 watt, 5 amp
● Coat hook
● Standard cloth seat, mechanical suspension, with 100-mm (4 in.) adjustable armrests
▲ Deluxe heated cloth seat, air suspension, with 100-mm (4 in.) adjustable armrests
▲ Premium thermally heated and actively cooled leather seat
● Retractable seat belt, 76 mm (3 in.) (conforms to SAE J368)
● Floor mat
● Front windshield wiper with intermittent speeds
● Gauges (illuminated): Diesel Exhaust Fluid (DEF) / Engine coolant / Fuel
● Horn, electric
● Hourmeter, electric
● Hydraulic shutoff lever, all controls
● Hydraulic warm-up control
● Interior light
● Large cup holder
● Machine Information Center (MIC)
● Mode selectors (illuminated): Power modes (3) / Travel modes (2 with automatic shift) / Work mode (1)
● Multifunction, color LCD monitor with: Diagnostic capability / Multiple-language capabilities / Maintenance tracking / Clock /

210 P Operator's Station (continued)
System monitoring with alarm features: Auto-idle indicator, engine air cleaner restriction indicator light, engine check, engine coolant temperature indicator light with audible alarm, engine oil pressure indicator light with audible alarm, low-alternator-charge indicator light, low-fuel indicator light, low DEF indication with audible alarm, fault code alert indicator, fuel-rate display, wiper-mode indicator, work-lights-on indicator, and work-mode indicator
● Motion alarm with cancel switch (conforms to SAE J994)
● Power-boost switch on right console lever
● Auxiliary hydraulic control switches in right console lever
● SAE 2-lever control pattern
● Tinted glass
● Transparent tinted overhead hatch
● Hot/cold beverage compartment
● USB charging port
▲ Hydraulic oil filter restriction indicator light
▲ Protection screens for cab front, rear, and side
▲ Window vandal-protection covers
▲ In-monitor adjustable flow and pressure auxiliary hydraulics with auxiliary function lever (AFL)
Grade Control
▲ Grade Guidance, factory integrated
▲ SmartGrade™ Ready including 2D grade control
▲ SmartGrade 3D grade control
Electrical
● 300-amp alternator
● Blade-type multi-fused circuits
● Positive-terminal battery covers
● JDLink™ wireless communication system (available in specific countries; see your dealer for details)
▲ Right rear left 270-deg. camera system with LED surround lighting
● Rearview camera
▲ Cab extension wiring harness
Lights
● Work lights: LED / 1 mounted on left side of boom / 1 mounted on frame
Trim Packages
▲ Level 1: Mechanical seat and standard front LED work lights
● Level 2: Heated, air-suspension seat and standard front LED work lights
● Level 3: Heated, air-suspension seat; deluxe front LED work lights; and chrome exhaust
● Level 4: Premium-leather, thermal-heating, and active-cooling seat; deluxe front LED work lights; and chrome exhaust
Application Packages
▲ Cold-weather package: Engine-block heater
▲ Debris package: Engine air centrifugal pre-cleaner and reversing electric variable-speed fan drive with selectable intervals and manual override (for use in airborne-debris environments)

While general information, pictures, and descriptions are provided, some illustrations and text may include product options and accessories NOT AVAILABLE in all regions, and in some countries products and accessories may require modifications or additions to ensure compliance with the local regulations of those countries.

Net engine power is with standard equipment including air cleaner, exhaust system, alternator, and cooling fan, at test conditions specified per ISO 9249. No derating is required up to 3050-m (10,000 ft.) altitude. Specifications and design subject to change without notice. Wherever applicable, specifications are in accordance with SAE standards. Except where otherwise noted, these specifications are based on a unit with 1065-mm (42 in.), 0.91-m³ (1.19 cu. yd.), 886-kg (1,951 lb.) general-purpose bucket; 2.91-m (9 ft. 7 in.) arm; 4250-kg (9,370 lb.) standard counterweight; 800-mm (32 in.) triple semi-grouser shoes; full fuel tank; and 79-kg (175 lb.) operator.




ME210PAU (25-01)

 **JOHN DEERE**