



# REPLACEMENT PART GUIDE

## PowerTech™ PWX 4.5L 4045HFG92 Diesel OEM Genset OEM Engine (IT4)



**FUEL FILTER**  
**SECONDARY FUEL FILTER**  
[RE544394](#) (35B5) (35B8) (35HA)  
 500 hrs of operation or every 12 months.



**FUEL FILTER**  
**PRIMARY FUEL FILTER**  
[RE541922](#) (35B8) (35HD) (81AV),  
 (81BC), 81AW)  
 500 hrs of operation or every 12 months.



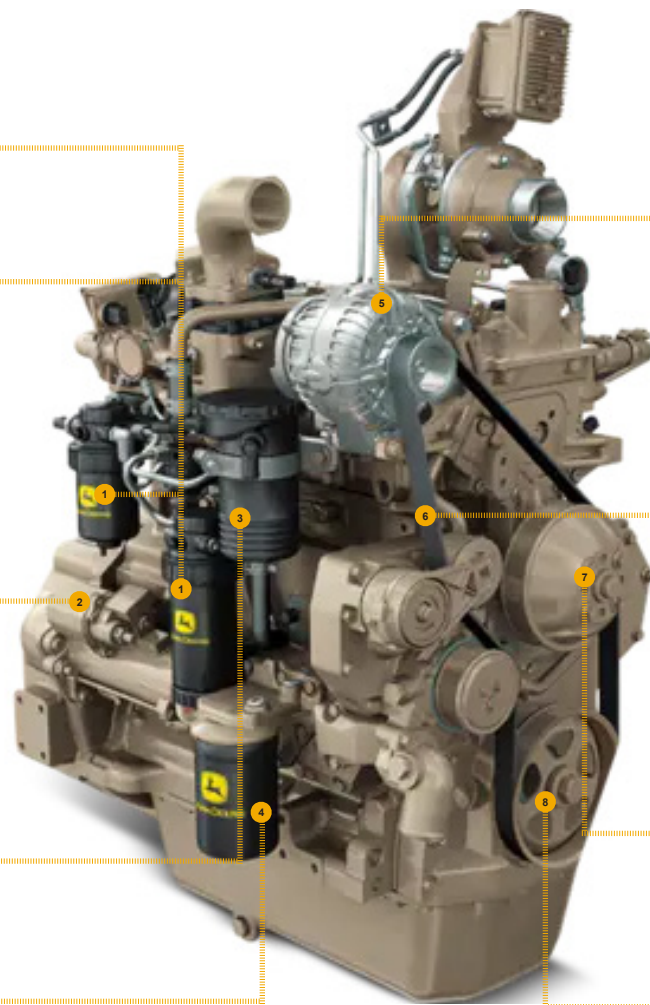
**STARTER**  
[RE523501](#) (12V) (3073)  
[DZ110081](#) (12 V, 3.4 KW) (3075)  
[RE523502](#) (12 V) (3084)  
[DZ110082](#) (24V) (3092)  
[DZ110083](#) (24 V; 4 KW) (3096)  
[RE549229](#) (12V) (30AT)  
[RE549230](#) (24 V) (30AU)  
[RE551645](#) (12V) (30AX)  
[RE551644](#) (24V) (30AY)  
[RE546868](#) (12V, 3.2 KW) (30BA)  
[RE546860](#) (12V) (30BQ)  
[RE546861](#) (12V, 2.7 KW) (30BR)  
[RE546862](#) (12 V) (30BS)  
[RE551637](#) (12 V) (30BX)  
[RE551636](#) (12 V 90 A) (30BY)



**CRANKCASE VENT SYSTEM OCV FILTER**  
[DZ105796](#) (2989)  
[DZ105100](#) (29EP)  
 1500 hours of operations.



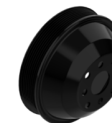
**OIL FILTER**  
[RE504836](#) (8842) (8843) (8845) (8848)  
 (8849) (88A6) (8860) (88A7)  
 500 Hours of Operation or Every  
 12 Months.



**ALTERNATOR**  
[DZ123153](#) (12V, 90A) (3172)  
[RE558675](#) (24 V; 60 A) (3175)



**FAN BELT**  
[DZ118559](#) (LGTH = 1700 mm) (249B)  
[DZ118558](#) (LGTH = 1680 mm) (24KQ)  
[DZ118648](#) (LGTH = 1810 mm) (24KR)  
[DZ118560](#) (LGTH = 1720 mm) (24KS) (24LD)  
[DZ119385](#) (LGTH = 1650 mm) (24LA)  
[DZ118265](#) (LGTH = 1805 mm) (24LB)  
[DZ118649](#) (LGTH = 1815 mm) (24LC)  
[DZ118650](#) (LGTH = 1820 mm) (24LE)  
[DZ118562](#) (LGTH = 1775 mm) (24LF)  
[DZ118563](#) (LGTH = 1785 mm) (24LG)  
[DZ118606](#) (LGTH = 1798 mm) (24LH)  
[R533596](#) (LGTH = 1780 mm) (24LJ)  
[DZ118564](#) (LGTH = 1790 mm) (24LK)



**FAN PULLEY**  
[R128660](#) (OD=168 mm) (8667)  
[R128662](#) (OD=203 mm) (8668)  
[R128659](#) (OD=154 mm) (8671)  
[R128661](#) (OD=184 mm) (8672)



**CRANKSHAFT PULLEY & DAMPER**  
[R503880](#) (OD=189 mm) (1327)  
[R545125](#) (OD=193 mm) (1334)



**SHORT BLOCK ASSEMBLY**  
[DZ109718](#)





# REMAN PARTS GUIDE

## PowerTech™ PWX 4.5L 4045HFG92 Diesel OEM Genset OEM Engine (IT4)



**CONTROLLER**  
[SE503035](#) (REMAN FOR [RE551416](#)) (16BB)

**CYLINDER HEAD**  
[SE502768](#) (REMAN FOR [RE588246](#)) (5138)

**STARTER**  
[SE501851](#) (REMAN FOR [DZ110081](#), [RE507670](#)) (12 V)(3075)  
[SE502286](#) (REMAN FOR [DZ110082](#)) (24 V, 4 KW) (3092)  
[SE502631](#) (REMAN FOR [RE523501](#)) (12 V, 4.2 KW) (3073)  
[SE502632](#) (REMAN FOR [RE523502](#)) (12 V, 4.2 KW) (3084)  
[SE502558](#) (REMAN FOR [RE549229](#)) (12 V)(30AT)  
[SE502823](#) (REMAN FOR [RE549230](#)) (24 V) (30AU)  
[SE502736](#) (REMAN FOR [RE551644](#)) (24 V) (30AY)

**CONNECTING ROD**  
[SE501094](#) (REMAN FOR [RE500608](#)) (4851)

**OIL PUMP**  
[SE501814](#) (REMAN FOR [DZ100057](#)) (5001)

**TURBOCHARGER**  
[SE502654](#) (REMAN FOR [RE544979](#)) (65A6) (65A8)  
[SE502761](#) (REMAN FOR [RE571945](#)) (65A6) (65A8)  
[SE502759](#) (REMAN FOR [RE571946](#)) (65A3)  
[SE502815](#) (REMAN FOR [RE571951](#)) (65E7) (65E8)

**ALTERNATOR**  
[SE502560](#) (REMAN FOR [DZ123153](#)) (12 V, 90A) (3172)

**FUEL INJECTION PUMP**  
[SE502769](#) (REMAN FOR [RE543423](#)) (16BB) (16CQ)

**FUEL INJECTION NOZZLE**  
[SE502671](#) (REMAN FOR [RE545562](#)) (16BB)  
[SE502730](#) (REMAN FOR [RE545563](#)) (16CQ)

**WATER PUMP**  
[SE501227](#) (REMAN FOR [RE546918](#)) (4445) (4440)  
[SE502816](#) (REMAN FOR [RE546918](#)) (4445) (4440)

**COMPLETE BLOCK ASSEMBLY**  
[RM100172](#) ( USE WITH 3612 Option Code)  
[SE502829](#) (USE WITH 3614 Option Code)  
 \*(INCLUDES CYLINDER HEAD WITH VALES AND ROCKER ARM ASSEMBLY, INCLUDES OIL PUMP ASSEMBLY BALANCER SHAFTS, COMPLETE GASKET KIT WITH FRONT AND REAR SEALS).



\*THIS PART IS NOT AVAILABLE IN ALL COUNTRIES - COMPLETE BLOCK ASSEMBLY

CLICK PART NUMBER TO BUY

\*See operator's manual for additional details