

REPLACEMENT PARTS GUIDE

444L (PIN: 1DW444L__L705208—)



HYDRAULIC RESERVOIR BREATHER FILTER

[AM39653](#)

Interval (hrs) - 500.



FUEL TANK BREATHER FILTER

[H216169](#)

Interval (hrs) - 1000.



OPEN CRANKCASE VENTILATION (OCV) FILTER

[DZ105100](#)

Interval (hrs) - 2000.



ENGINE ROCKER ARM COVER GASKET

[R524499](#)

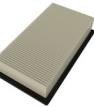
Interval (hrs) - 2000.



DRIVELINE DAMPER

[AT308993](#)

Interval (hrs) - As Required.



CAB RECIRCULATING AIR FILTER

[AT307501](#)

Interval (hrs) - As Required.



CAB FRESH AIR FILTER

[AT191102](#)

Interval (hrs) - As Required.



HYDRAULIC SYSTEM RETURN FILTER

[AT335977](#)

Interval (hrs) - 4000.



DIESEL EXHAUST FLUID (DEF) DOSING UNIT FILTER⁴

[DZ114640](#)

Interval (hrs) - 4000.



DIESEL EXHAUST FLUID (DEF) TANK BREATHER FILTER

[R524499](#)

Interval (hrs) - 4000.



ENGINE OIL FILTER

[RE504836](#)

Interval (hrs) - 500.



PRIMARY FUEL FILTER ELEMENT

[DZ115391](#)

Interval (hrs) - 500.



FINAL FUEL FILTER

[DZ115390](#)

Interval (hrs) - 500.



IN-LINE FUEL FILTER

[AT489745](#)

Interval (hrs) - 500.



AXLE OIL FILTERS (IF EQUIPPED)

[AT367635](#)

Interval (hrs) - 1000.



ENGINE AIR CLEANER ELEMENT—PRIMARY FILTER

[AT178516](#)

Interval (hrs) - 1000



TRANSMISSION OIL FILTER

[AT468647](#)

Interval (hrs) - 2000.



AIR CLEANER DUST UNLOADER VALVE

[R48568](#)

Interval (hrs) - 1000.



ENGINE AIR CLEANER ELEMENT—SECONDARY FILTER

[AT178517](#)

Interval (hrs) -1000.



DIESEL PARTICULATE FILTER (COMPONENT OF EXHAUST FILTER)

[DZ104594](#)

Interval (hrs) - As Required.



JOHN DEERE
Genuine Parts and Service

CLICK PART NUMBER TO BUY

*See operator's manual for additional details.

OIL & CAPACITIES INFORMATION

444L (PIN: 1DW444L__L705208—)

Part Description	Qty or Capacity	Change Interval In Hours
John Deere Plus-50™ II Engine Oil ⁵	14.5 L (3.8 gal)	500
John Deere Hy-Gard™ Park Brake Oil ⁵	300 mL (10.1 fl oz)	1000
John Deere Hy-Gard™ Transmission Oil ⁵	18.5 L (4.9 gal)	2000
John Deere Hy-Gard™ Front Axle Oil ⁵	22.0 L (5.8 gal)	250
John Deere Hy-Gard™ Rear Axle Oil ⁵	22.0 L (5.8 gal)	250
John Deere Hydrau™ Hydraulic System Oil ⁵	83.3 L (22.0 gal)	4000
John Deere COOL-GARD™II Pre-Mix	19.0 L (5.0 gal)	6000
Coolant Extender	As Required	As Required
Fluid Analysis Test Kits ⁶		
Diesel Engine Oil	1	250
Transmission Oil	1	500
Axle Oil	2	500
Park Brake Oil	1	500
Hydraulic Oil	1	500
Diesel Fuel	1	500
Engine Coolant	1	500

⁵See operator's manual for recommended oil type and oil viscosities based on operating temperatures.

⁶Based on fluid analysis results, intervals may need to be adjusted for operating conditions. Consult an authorized John Deere dealer.

Plus-50 is a trademark of Deere & Company

Hy-Gard is a trademark of Deere & Company

Hydrau is a trademark of Deere & Company

COOL-GARD is a trademark of Deere & Company



Service Intervals

As Required	
<input type="checkbox"/> Check windshield washer fluid level	<input type="checkbox"/> Inspect engine air cleaner elements
<input type="checkbox"/> Check cab fresh air filter	<input type="checkbox"/> Inspect serpentine belt
<input type="checkbox"/> Check cab recirculation filter	<input type="checkbox"/> Clean cooler cores
<input type="checkbox"/> Check and clean precleaner housing (if equipped)	<input type="checkbox"/> Drain water from primary fuel filter with water separator
<input type="checkbox"/> Check and clean heating and air conditioning housing	<input type="checkbox"/> Service exhaust filter
<input type="checkbox"/> Inspect tires and check pressure	<input type="checkbox"/> Drain, flush, and refill fuel tank
<input type="checkbox"/> Check wheel bolt torque	<input type="checkbox"/> Lubricate cab door hinges
<input type="checkbox"/> Clean hydraulic pump case drain in-line screen	<input type="checkbox"/> Clean debris from around coupler lock cylinder (if equipped)
<input type="checkbox"/> Check rear camera and radar object detection (ROD) system (if equipped)	<input type="checkbox"/> Clean and tighten battery terminals
Every 10 Hours or Daily	
<input type="checkbox"/> Clean air cleaner dust unloader valve	<input type="checkbox"/> Check hydraulic system oil level
<input type="checkbox"/> Check coolant level at surge tank	<input type="checkbox"/> Check transmission oil level
<input type="checkbox"/> Check engine oil level	
Every 100 Hours	
<input type="checkbox"/> Lubricate loader linkage and cylinder pivots	<input type="checkbox"/> Lubricate coupler lock pins (if equipped)
Initial Service - 250 Hours	
<input type="checkbox"/> Drain and refill front and rear axle oil	<input type="checkbox"/> Replace axle oil filters (if equipped)
Every 250 Hours	
<input type="checkbox"/> Take engine oil sample	
Every 500 Hours	
<input type="checkbox"/> Lubricate driveline upper and lower sliding joints ²	<input type="checkbox"/> Replace in-line fuel filter
<input type="checkbox"/> Check hybrid battery electrolyte level (if equipped)	<input type="checkbox"/> Lubricate front and rear shaft seals on park brake
<input type="checkbox"/> Replace hydraulic reservoir breather	<input type="checkbox"/> Check ride control accumulator (if equipped)
<input type="checkbox"/> Check front and rear axle oil level	<input type="checkbox"/> Take axle oil sample
<input type="checkbox"/> Check air intake hoses and charge air cooler tube couplings	<input type="checkbox"/> Take transmission oil sample
<input type="checkbox"/> Drain and refill engine oil and replace filter	<input type="checkbox"/> Take hydraulic oil sample
<input type="checkbox"/> Replace primary fuel filter element	<input type="checkbox"/> Take park brake oil sample
<input type="checkbox"/> Replace final fuel filter	<input type="checkbox"/> Take diesel fuel sample
<input type="checkbox"/> Check park brake oil level	<input type="checkbox"/> Take engine coolant sample
Every 1000 Hours	
<input type="checkbox"/> Replace air cleaner dust unloader valve	<input type="checkbox"/> Replace axle oil filters (if equipped)
<input type="checkbox"/> Replace engine air cleaner elements	<input type="checkbox"/> Lubricate frame hinge pivots ²
<input type="checkbox"/> Replace fuel tank breather filter	<input type="checkbox"/> Drain and refill park brake oil ³
<input type="checkbox"/> Check coolant condition	
Every 1500 Hours	
<input type="checkbox"/> Replace open crankcase ventilation (OCV) filter	

Service Intervals

Every 2000 Hours	
<input type="checkbox"/> Drain and refill transmission oil and replace filter	<input type="checkbox"/> Check and adjust engine valve lash
<input type="checkbox"/> Drain and refill front and rear axle oil	<input type="checkbox"/> Rerun transmission clutch calibration (cab monitor)
<input type="checkbox"/> Clear front and rear axle oil recirculation screens (if equipped)	
Every 4000 Hours	
<input type="checkbox"/> Replace diesel exhaust fluid (DEF) tank breather filter	<input type="checkbox"/> Drain, flush, and refill hydraulic system oil
<input type="checkbox"/> Replace diesel exhaust fluid (DEF) dosing unit filter ⁴	<input type="checkbox"/> Clean hydraulic system fill strainer
<input type="checkbox"/> Replace hydraulic system return filter	
Every 5000 Hours	
<input type="checkbox"/> Check driveline damper for cracks	
Every 6000 Hours	
<input type="checkbox"/> Drain and refill cooling system	