

REPLACEMENT PARTS GUIDE

544L 4WD Loader (PIN: 1DW544L___F693054—)



DIESEL EXHAUST FLUID (DEF) HEADER SUCTION FILTER AND BAFFLE

[AT502964](#)

Interval (hrs) - As Required.



FINAL FUEL FILTER

[DZ115392](#)

Interval (hrs) - 500.



HYDRAULIC SYSTEM RETURN FILTER

[AT335977](#)

Interval (hrs) - 4000.



ENGINE ROCKER ARM COVER GASKET

[R528743](#)

Interval (hrs) - 2000.



AXLE OIL FILTERS—IF EQUIPPED

[AT367635](#)

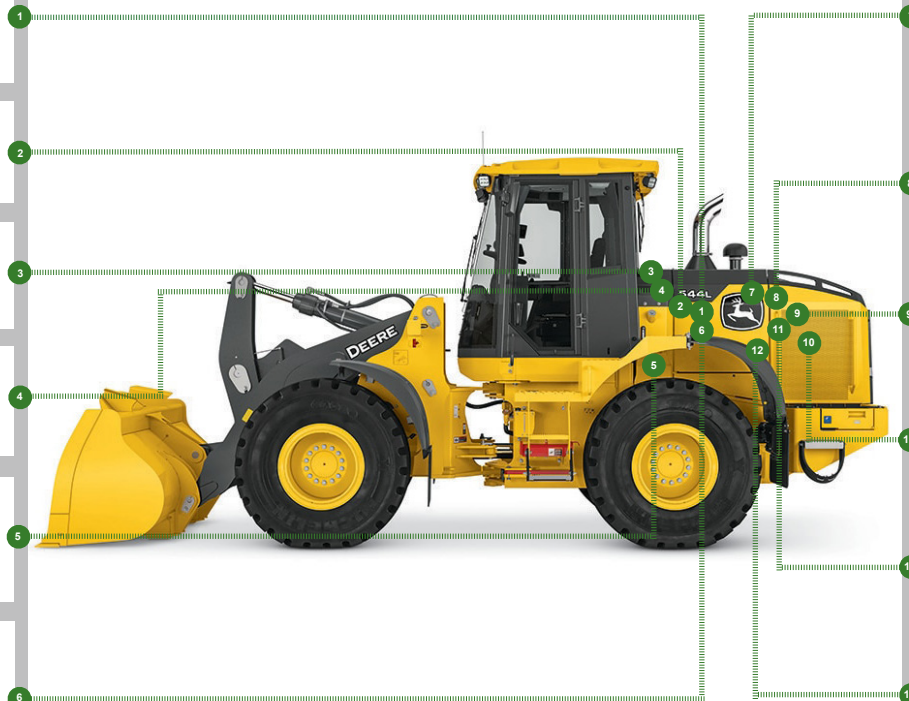
Interval (hrs) - 1000.



OPEN CRANKCASE VENTILATION (OCV) FILTER

[DZ105100](#)

Interval (hrs) - 2000.



ENGINE AIR CLEANER DUST UNLOADER VALVE

[R48568](#)

Interval (hrs) - 1000.



HYDRAULIC RESERVOIR BREATHER FILTER

[AM39653](#)

Interval (hrs) - 500.



ENGINE AIR FILTER ELEMENT—SECONDARY

[AT178517](#)

Interval (hrs) - As Required.



TRANSMISSION OIL FILTER

[AT468647](#)

Interval (hrs) - 2000.



IN-LINE FUEL FILTER

[AT489745](#)

Interval (hrs) - 500.



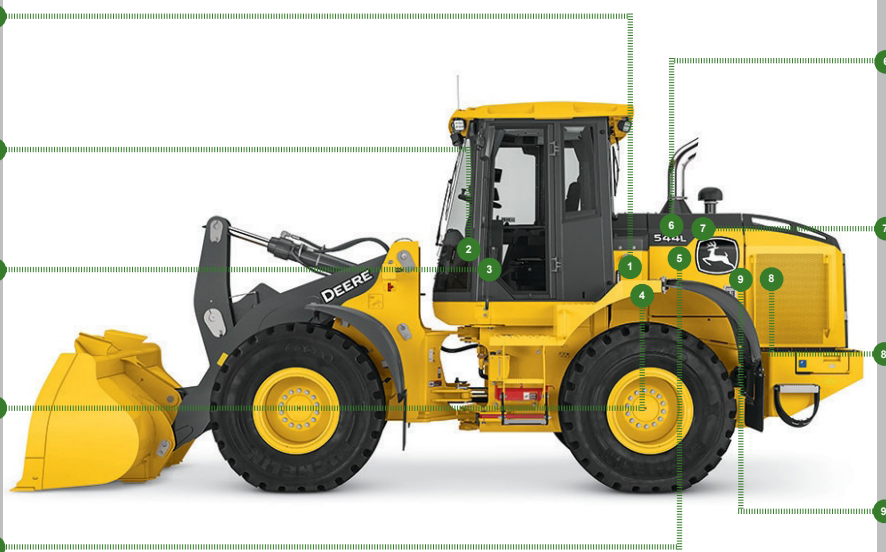
FUEL TANK BREATHER FILTER

[H216169](#)

Interval (hrs) - 1000.

REPLACEMENT PARTS GUIDE

544L 4WD Loader (PIN: 1DW544L___F693054—)



SERPENTINE BELT

[T437053](#)

Interval (hrs) - As Required.



CAB RECIRCULATING FILTER

[AT307501](#)

Interval (hrs) - As Required.



CAB FRESH AIR FILTER

[AT191102](#)

Interval (hrs) - As Required.



ENGINE OIL FILTER

[RE539279](#)

Interval (hrs) - 500.



PRIMARY FUEL FILTER

[DZ115391](#)

Interval (hrs) - 500.



DIESEL PARTICULATE FILTER (COMPONENT OF EXHAUST FILTER)

[DZ104594](#)

Interval (hrs) - As Required.



ENGINE AIR FILTER ELEMENT—PRIMARY

[AT178516](#)

Interval (hrs) - As Required.



DIESEL EXHAUST FLUID (DEF) TANK BREATHER FILTER

[H216169](#)

Interval (hrs) - 4000.



DIESEL EXHAUST FLUID (DEF) DOSING UNIT FILTER

[DZ114640](#)

Interval (hrs) - 4000.



JOHN DEERE
Genuine Parts and Service

OILS AND CAPACITIES INFORMATION

544L 4WD Loader (PIN: 1DW544L___F693054—)

Part Description	Qty or capacity	Change Interval In Hours
John Deere Plus-50™ II Engine Oil ²	19.0 L (5.0 gal)	500
John Deere Hy-Gard™ Front Axle Oil ²	17.0 L (4.5 gal)	2000
John Deere Hy-Gard™ Rear Axle Oil ²	17.0 L (4.5 gal)	2000
John Deere Hy-Gard™ Park Brake Oil ²	0.3 L (10.0 floz)	1000
John Deere Hy-Gard™ Transmission Oil ²	21.5 L (5.6 gal)	2000
John Deere Hydrau™ Hydraulic Oil ²	83.0 L (22.0 gal)	4000
John Deere Cool-Gard™ II Pre-Mix	23.5 L (6.2 gal)	6000
Fluid Analysis Test Kits ³		
Diesel Engine Oil	1	250
Transmission Oil	1	500
Hydraulic Oil	1	500
Park Brake and Axle Oil	3	500
Diesel Fuel	1	500
Engine Coolant	1	500
² See operator's manual for recommended oil type and oil viscosities based on operating temperatures. ³ Based on fluid analysis results, intervals may need to be adjusted for your operating conditions. Consult your local John Deere dealer.		

Plus-50 is a trademark of Deere & Company

Hydrau is a trademark of Deere & Company

Hy-Gard is a trademark of Deere & Company

Cool-Gard is a trademark of Deere & Company



CLICK PART NUMBER TO BUY

*See operator's manual for additional details

Service Intervals

As Required	
<input type="checkbox"/> Check windshield washer fluid level	<input type="checkbox"/> Service exhaust filter
<input type="checkbox"/> Inspect tires and check pressure	<input type="checkbox"/> Drain, flush, and refill fuel tank
<input type="checkbox"/> Check wheel bolt torque	<input type="checkbox"/> Check cab fresh air filter
<input type="checkbox"/> Inspect engine air cleaner elements	<input type="checkbox"/> Check cab recirculation filter
<input type="checkbox"/> Inspect serpentine belt	<input type="checkbox"/> Check and clean cab air filter precleaner (if equipped)
<input type="checkbox"/> Clean cooler cores	<input type="checkbox"/> Clean hydraulic pump case drain in-line screen
<input type="checkbox"/> Check rear camera and radar object detection (ROD) system (if equipped)	<input type="checkbox"/> Clean debris from coupler lock cylinder (if equipped)
<input type="checkbox"/> Drain water from primary fuel filter with water separator	<input type="checkbox"/> Lubricate cab door hinges
<input type="checkbox"/> Clean and tighten battery terminals	
Every 10 Hours or Daily	
<input type="checkbox"/> Clean air cleaner dust unloader valve	<input type="checkbox"/> Check hydraulic system oil level
<input type="checkbox"/> Check coolant level at surge tank	<input type="checkbox"/> Check transmission oil level
<input type="checkbox"/> Check engine oil level	
Every 100 Hours	
<input type="checkbox"/> Lubricate loader linkage and cylinder pivots	<input type="checkbox"/> Lubricate coupler lock pins (if equipped)
Initial Service—250 Hours	
<input type="checkbox"/> Drain and refill front and rear axle oil	<input type="checkbox"/> Replace axle oil filters (if equipped)
Every 250 Hours	
<input type="checkbox"/> Take engine oil sample	
Every 500 Hours	
<input type="checkbox"/> Lubricate driveline upper and lower sliding joints	<input type="checkbox"/> Replace in-line fuel filter
<input type="checkbox"/> Lubricate front and rear axle shaft seals	<input type="checkbox"/> Lubricate front and rear shaft seals on park brake
<input type="checkbox"/> Check hybrid battery electrolyte level (if equipped)	<input type="checkbox"/> Check ride control accumulator (if equipped)
<input type="checkbox"/> Replace hydraulic reservoir breather filter	<input type="checkbox"/> Take transmission oil sample
<input type="checkbox"/> Check front and rear axle oil level	<input type="checkbox"/> Take hydraulic oil sample
<input type="checkbox"/> Check air intake hoses and charge air cooler tube couplings	<input type="checkbox"/> Take park brake oil sample
<input type="checkbox"/> Drain and refill engine oil and replace filter	<input type="checkbox"/> Take diesel fuel sample
<input type="checkbox"/> Replace primary fuel filter	<input type="checkbox"/> Take engine coolant sample
<input type="checkbox"/> Replace final fuel filter	<input type="checkbox"/> Take axle oil sample
<input type="checkbox"/> Check park brake oil level	
Every 1000 Hours	
<input type="checkbox"/> Replace air cleaner dust unloader valve	<input type="checkbox"/> Replace fuel tank breather filter
<input type="checkbox"/> Replace engine air cleaner elements	<input type="checkbox"/> Lubricate frame hinge pivots
<input type="checkbox"/> Check coolant condition	<input type="checkbox"/> Drain and refill park brake oil
<input type="checkbox"/> Replace axle oil filters (if equipped)	

Service Intervals

Every 2000 Hours	
<input type="checkbox"/> Drain and refill front and rear axle oil	<input type="checkbox"/> Drain and refill transmission oil and replace filter ²
<input type="checkbox"/> Replace open crankcase ventilation (OCV) filter	<input type="checkbox"/> Rerun transmission clutch calibration
<input type="checkbox"/> Check and adjust engine valve lash	
Every 4000 Hours	
<input type="checkbox"/> Replace diesel exhaust fluid (DEF) tank breather filter	<input type="checkbox"/> Replace diesel exhaust fluid (DEF) dosing unit filter
<input type="checkbox"/> Replace diesel exhaust fluid (DEF) baffle	<input type="checkbox"/> Replace hydraulic system return filter
<input type="checkbox"/> Clean diesel exhaust fluid (DEF) tank	<input type="checkbox"/> Drain, flush, and refill hydraulic system oil
<input type="checkbox"/> Replace diesel exhaust fluid (DEF) header suction filter	<input type="checkbox"/> Clean hydraulic system fill strainer
Every 5000 Hours	
<input type="checkbox"/> Check driveline damper for cracks	
Every 6000 Hours	
<input type="checkbox"/> Drain and refill cooling system	