

REPLACEMENT PARTS GUIDE

850J (PIN: 1T0850JX__C216392—)



HYDRAULIC FAN OIL RETURN FILTER

[T175002](#)

Interval (hrs) - 2000



CAB RECIRCULATION AIR FILTER

[AT315957](#)

Interval (hrs) - As required



CAB FRESH AIR FILTER

[AT191102](#)

Interval (hrs) - As required



AUXILIARY WATER SEPARATOR FUEL FILTER—IF EQUIPPED

[AT365870](#)

Interval (hrs) - 500



HYDROSTATIC CHARGE OIL FILTER HYDRAULIC OIL FILTER

[AT318160](#)

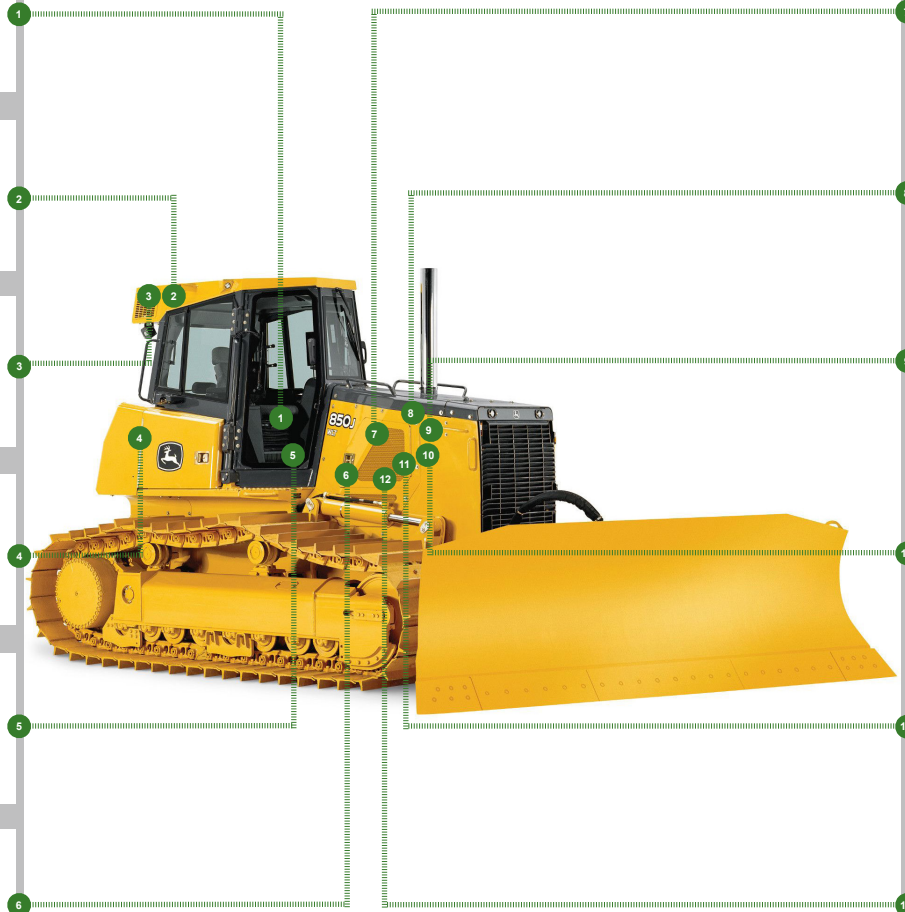
Interval (hrs) - 2000



ENGINE ROCKER ARM COVER GASKET

[R524497](#)

Interval (hrs) - 2000



ENGINE OIL FILTER

[RE504836](#)

Interval (hrs) - 500



ENGINE AIR CLEANER DUST UNLOADER VALVE

[T158495](#)

Interval (hrs) - As Required



PRIMARY FUEL FILTER

[RE529643](#)

Interval (hrs) - 500



FINAL FUEL FILTER

[RE522878](#)

Interval (hrs) - 500



ENGINE AIR FILTER ENGINE AIR FILTER ELEMENT—PRIMARY

[AT223226](#)

Interval (hrs) - As Required



ENGINE AIR FILTER ELEMENT—SECONDARY

[AT175224](#)

Interval (hrs) - As required.












JOHN DEERE
Genuine Parts and Service

CLICK PART NUMBER TO BUY

*See operator's manual for additional details.

REPLACEMENT PARTS GUIDE

850J (PIN: 1T0850JX_ _C216392—)

Part Description	Part Number	Qty or capacity	Change Interval In Hours
John Deere Plus-50™ II Engine Oil ² 	TY26669	24.6 L (6.5 gal)	500
John Deere Hydrau™ Hydraulic System ² 	TY27367	106.0 L (28.0 gal)	2000
John Deere Hydrau™ Hydrostatic System ² 	TY27367	106.0 L (28.0 gal)	2000
Inner Final Drive Oil (each side) LT ² 	TY6354	8.0 L (2.1 gal.)	1000
Inner Final Drive Oil (each side) WLT ² Inner Final Drive Oil (each side) WT ² 	TY6354	15.5 L (4.1 gal.)	1000
Outer Final Drive Oil (each side) ² 	TY6354	16.3 L (4.3 gal.)	1000
Track Frame Pivot Shaft Oil 	TY6354	1.7 L (1.7 qt.)	1000
COOL-GARD™ II Pre-Mix 	TY26575	35.0 L (9.2 gal.)	6000
Coolant Extender 	TY26603	As Required	As Required
Fluid Analysis Kits²			
Diesel Engine Oil	AT346594	1	500
Hydraulics and Powertrain	AT346594	4	500
Diesel Fuel	AT180344	1	500
Engine Coolant	TY26873	1	500
COOL-GARD™ II Test Strips	TY26605	1	500

REPLACEMENT PARTS GUIDE

850J (PIN: 1T0850JX__C216392—)

²See operator's manual for recommended oil type and oil viscosities based on operating temperatures.

³Based on fluid analysis results, intervals may need to be adjusted for operating conditions. Consult an authorized John Deere dealer.

Plus-50 is a trademark of Deere & Company

Hy-Gard is a trademark of Deere & Company

Hydrau is a trademark of Deere & Company

COOL-GARD is a trademark of Deere & Company

850J (PIN: 1T0850JX__C216392—)

As Required	
• Check alternator belt tension	• Check and adjust track sag
• Check air cleaner restriction indicator	• Replace engine air cleaner elements
• Check and adjust trunnion bearing clearance—if equipped	• Check and adjust pushbeam bearing clearance—if equipped
• Add coolant extender as indicated by COOL-GARD™ II test strips	
Every 10 Hours or Daily	
• Check engine oil level	• Check transmission oil level
• Check coolant surge tank	• Check hydraulic system oil level
• Lubricate C-frame dozer linkage	• Lubricate pushbeam dozer linkage
• Check or drain auxiliary water separator fuel filter—if equipped	• Check or drain primary water separator fuel filter—if equipped
Every 50 Hours	
• Lubricate left and right end crossbar pivot	• Lubricate lift cylinder pivots
• Lubricate ripper—if equipped	
Initial Service—250 Hours¹	
• Change break-in engine oil and replace filter	
Every 250 Hours	
• Check inner and outer final drive oil level	• Take engine oil sample
• Check blade shim adjustment	
Every 500 Hours	
• Change engine oil and replace filter	• Take diesel fuel sample
• Replace fuel filters	• Take engine coolant sample
• Check battery electrolyte level; clean and tighten	• Take inner and outer final drive oil sample
• Replace auxiliary water separator fuel filter—if equipped	• Take transmission oil sample
• Check air intake hoses	• Take hydraulic oil sample
Every 1000 Hours	
• Clean engine crankcase vent tube	• Check track frame pivot shaft oil
• Change inner and outer final drive oil	• Check coolant
Every 2000 Hours	
• Check and adjust engine valve lash	• Change hydrostatic transmission oil and replace filter
• Change hydraulic system oil and replace filter	• Replace hydraulic fan oil return filter
Every 6000 Hours	
• Drain and refill engine coolant system	