

FILTER OVERVIEW WITH SERVICE INTERVALS AND CAPACITIES

9000 Final Tier 4 (FT4) / Stage V Series Self-Propelled Forage Harvesters - 9700, 9800, 9900

CAB

FRESH AIR FILTER [RE284091](#)

Clean after every 500 hours and replace as required.



CAB

RECIRCULATION AIR FILTER [L214634](#)

Clean after every 500 hours and replace as required.



ENGINE

FUEL LINES BREATHER [H216169](#)

Replace after every 4500 hours or 3 years whichever occurs first.



HYDRAULICS (ProDrive™ only)

OIL FILTER [AXE27449](#)

Replace after the first 100 hours, then every 1000 hours.

(Click here for [capacity](#))



ENGINE

DIESEL EXHAUST FLUID (DEF) TANK VENT FILTER [H216169](#)

Replace after every 4500 hours or 3 years whichever occurs first.



HYDRAULICS

HYDRAULIC RESERVOIR OIL FILTER [AXE27447](#)

Replace after every 1000 hours or 2 years, whichever occurs first.

(Click here for [capacity](#))



ENGINE

PRIMARY AIR CLEANER [HXE43545](#)

Clean as required and replace after every 1500 hours.



ENGINE

SECONDARY AIR CLEANER [HXE43546](#)

Clean as required and replace after every 1500 hours.



ENGINE

FUEL FILTER [AXE79019](#) [LW12568445](#)

Replace after every 500 hours or 2 years whichever occurs first.



ENGINE

OIL FILTER [LW11427521](#)

Note 1 : If Plus-50™ II 5W-40 oil is used then replace after every 500 hours or 2 years whichever occurs first.

Note 2 : If Plus-50™ II 0W-40, Liebherr LH-00-ENGLA SAE 5W-30 or Liebherr LH-00-ENG5C SAE 10W-40 oil is used then replace after every 1000 hours or 2 years, whichever occurs first.

(Click here for [capacity](#))

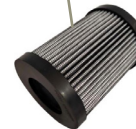


HYDRAULICS

POWER DISTRIBUTION GEAR OIL FILTER [AXE27449](#)

Replace after the first 100 hours, then every 1000 hours.

(Click here for [capacity](#))



ENGINE

CRANKCASE VENTILATION FILTER [LW12403708](#)

Replace after every 1000 hours of operation



JOHN DEERE
Genuine Parts and Service

https://www.deere.com/en_US/parts/parts_by_industry/ag/fmi/filter_maintenance_information.page

CAPACITIES

9000 Final Tier 4 (FT4) / Stage V Series Self-Propelled Forage Harvesters - 9700, 9800, 9900

CAPACITIES (Approximate):

Fuel Tank:

..... 1500 L (396 gal)

DEF Tank:

..... 102 L (27 gal)

Cooling System (Complete):

Cool-Gard™ II

..... 130 L (34.3 gal)

Expansion Tank - Cooling System (Complete)..... 26 L (6.67 gal)

Water Tank

..... 16 L (4.2 gal)

Air Compressor Tank (Main)

..... 40 L (10.6 gal)

Air Compressor Tank (Dryer Pre-charge)

..... 5 L (1.32 gal)

Engine With Filter:

Plus-50™ II

..... 99 L (26.2 gal)

Inoculant Tank

(High Volume)..... 380 L (100 gal)

(Low Volume)..... 30 L (8 gal)

Transmission (ProDrive™):

Hy-Gard™

..... 16 L (4.23 gal)

Final Drives (Each):

GL-5

..... 7 L (1.85 gal)

Four-Wheel Drive Rear Axle:

GL-5

Differential (Heavy Duty)..... 17 (4.50 gal)

Differential (Heavy Duty, California Rear Axle)..... 21 L (5.5 gal)

In Motor Housing..... 1 L (0.26 gal)

Reduction Gear (Heavy Duty)..... 0.7 L (0.18 gal)

Reduction Gear (Heavy Duty, California Rear Axle)..... 0.8 L (0.21 gal)

Hydraulic System:

Hy-Gard™

Hydraulic Oil Reservoir..... 47 L (12.41 gal)
(Without High Flow Dump Option)

Hydraulic Oil Reservoir..... 58 L (15.3 gal)
(With High Flow Dump Option)

Right Feedroll Gearbox..... 6.7 L (1.77 gal)

Left Feedroll Gearbox..... 1.55 L (0.41 gal)

Header Gearbox (Heavy Duty)..... 0.92 L (0.24 gal)

Power Distribution Gear Lubrication System:

Hy-Gard™

..... 27 L (7.13 gal)

Lubricant Container (JD XStream™ KP Kernel Processor):

..... 8 L (2.1 gal)

Air Conditioning System:

Refrigerant..... 2700 or 2900 g (6.0 or 6.5 lb)

[Return to Filter Overview](#)

