

FILTER OVERVIEW WITH SERVICE INTERVALS AND CAPACITIES

9750 STS Series Canadian Combine

ENGINE AIR FILTER

SECONDARY AIR FILTER – [AH174196](#)

Change secondary filter only with primary filter.



ENGINE AIR FILTER

PRIMARY AIR FILTER – [AH170798](#)

Replace every 400 hours or
Service filters only when engine air filter light stays ON or
change as required.

Note: Replace secondary filter with primary filter.

CAB AIR FILTER

RECIRCULATION AIR FILTER – [AH115836](#)

Clean or replace every 200 hours and as
required.



ENGINE OIL FILTER

OIL FILTER – [RE58935](#)

Minimum hours before first engine oil change
is 100 hours. Extended engine oil change
every 500 hours or annually, whichever come
first. The extended 500 hour interval is only
allowed if using Plus-50™ II oil with a John
Deere filter and diesel fuel with sulfur content
less than 15mg/kg (15ppm). If all conditions
are not met, change oil and filter at 250 hours
of operation.

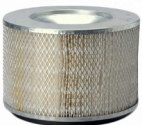


CAB AIR FILTER

AIR FILTER, HEAVY DUTY – [AH168783](#)

AIR FILTER, STANDARD – [AH115833](#)

Clean or replace every 50 hours
and as required.



HYDROSTATIC PUMP / ENGINE GEARCASE / HYDRAULIC FILTER

OIL FILTER – [AH128449](#)

Replace every 400 hours.

Note: Replace all three filters at a time.



ENGINE FUEL FILTER

FUEL FILTER – [RE507284](#)

Replace every 500 hours.



JOHN DEERE

Genuine Parts and Service

CAPACITIES

9750 STS Series Canadian Combine

CAPACITIES (Approximate):

Fuel Tank:

..... 945 L (249.64 gal)

Cooling System with Heater:

Cool-Gard™

..... 55 L (14.52 gal)

Hydraulic / Hydrostatic Reservoir:

Low Viscosity Hy-Gard™

..... 34 L (8.98 gal)

Feeder House Reverser Gearcase:

GL-5

Standard 0.9 L (0.23 gal)

High Capacity with Cooler 3.5 L (0.92 gal)

Final Drives (Each):

GL-5

Single Reduction 8.5 L (2.24 gal)

Countershaft Drive Gearcase:

GL-5

..... 1.2 L (0.31 gal)

Loading Auger Gearcase:

GL-5

..... 3.8 L (1 gal)

Engine Gearcase with Transfer:

Low Viscosity Hy-Gard™

..... 21.3 L (5.62 gal)

Engine Crankcase with Filter:

Torq-Gard Supreme™ or Plus-50™ II

..... 42 L (11.09 gal)

Transmission:

GL-5

..... 9.6 L (2.53 gal)

Two Speed Separator Drive Gearcase:

GL-5

..... 4.7 L (1.24 gal)

[Return to Filter Overview](#)

