

FILTER OVERVIEW WITH SERVICE INTERVALS AND CAPACITIES

CS690 Cotton Stripper

CAB

RECIRCULATION AIR FILTER - [H220870](#)

Clean or replace every 250 hours or as required. If operating in dusty conditions clean daily.

CAB

FRESH AIR FILTER - [AH115833](#)

Clean or replace every 50 hours or as required. If operating in dusty conditions clean daily.

TRANSMISSION

OIL FILTER - [AH128449](#)

Replace every 1000 hours.

(Click here for [capacity](#))



ENGINE

SECONDARY FUEL FILTER - [RE533910](#)

Replace every 400 hours annually, whichever occurs first.



ENGINE

PRIMARY FUEL FILTER - [RE539465](#)

Replace every 400 hours or annually, whichever occurs first.



ENGINE

AIR FILTER SAFETY ELEMENT - [AH212295](#)

Replace every 400 hours or annually, whichever occurs first.



ENGINE

AIR CLEANER PRIMARY ELEMENT - [AH222225](#)

Replace every 400 hours or annually, whichever occurs first.



HYDRAULICS

PUMP DRIVE GEARBOX OIL FILTER - [LVA10419](#)

Replace every 1000 hours.

(Click here for [capacity](#))



HYDRAULICS

HEADER CLEANER PUMP FILTER - [AH128449](#)

Replace every 1000 hours.



CHASSIS RETURN OIL FILTER - [AH128449](#)

Replace every 1000 hours.

(Click here for [capacity](#))



HYDRAULICS

PRIMARY RETURN OIL FILTER - [RE210857](#)

Replace every 1000 hours.

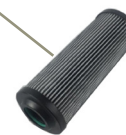
(Click here for [capacity](#))

HYDRAULICS

PROPEL SYSTEM OIL FILTER - [AN373366](#)

Replace every 1000 hours.

(Click here for [capacity](#))



ENGINE

DEF BREATHER - [H216169](#)

Replace after first 4500 hours.



ENGINE

DIESEL EXHAUST FLUID DOSING FILTER - [RE554498](#)

Replace after first 4500 hours.

(Click here for [capacity](#))



JOHN DEERE

Genuine Parts and Service

http://www.deere.com/en_US/parts/service/support/filter/overviews

CAPACITIES

CS690 Cotton Stripper

CAPACITIES (Approximate):

Fuel Tank:

..... 1022 L (270 gal)

Diesel Exhaust Fluid Tank:**Diesel Exhaust Fluid**

..... 60.5 L (16 gal)

Auxiliary Water Tank:

..... 258 L (68 gal)

Cooling System:**Cool-Gard™ II**

..... 70 L (18.5 gal)

Engine Crankcase (Includes Filter):**Plus-50™ II**

..... 43 L (11.4 gal)

Hydraulic Oil Reservoir:**Hy-Gard™**

..... 189 L (50 gal)

Hydraulic and Hydrostatic System:**Hy-Gard™**

..... 276 L (73 gal)

ProDrive™ Transmission and Brake System:**Hy-Gard™**

..... 19 L (5 gal)

Final Drive: (2 Used)**GL-5**

..... 7.8 L (2 gal)

Pump Drive Gearbox:**Hy-Gard™**

..... 15.1 L (4 gal)

Row Unit Gear Case: (6 Used)**Hy-Gard™**

..... 0.7 L (0.18 gal)

Rear Axle Main Body Housing:**GL-5**

..... 9.9 L (2.6 gal)

Rear Axle Auxiliary Gearbox:**GL-5**

..... 1.3 L (0.34 gal)

Rear Axle Planetary: (2 Used)**GL-5**

..... 3.8 L (1 gal)

[Return to Filter Overview](#)

